

ARG63032 Mouse anti-Human IgE antibody [4H10] (FITC)

Package: 100 µg
Store at: 4°C

Summary

Product Description	FITC-conjugated Mouse Monoclonal antibody [4H10] recognizes Human IgE
Tested Reactivity	Hu
Tested Application	FACS
Host	Mouse
Clonality	Monoclonal
Clone	4H10
Isotype	IgG1
Target Name	IgE
Species	Human
Immunogen	Purified human IgE.
Target Ig	Human IgE
Conjugation	FITC
Alternate Names	IgE

Application Instructions

Application table	Application	Dilution
	FACS	4 µg/ml
Application Note	* The dilutions indicate recommended starting dilutions and the optimal dilutions or concentrations should be determined by the scientist.	

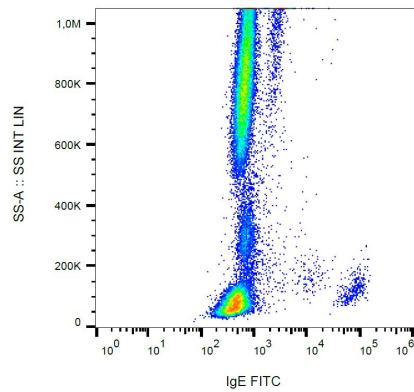
Properties

Form	Liquid
Purification Note	The purified antibody is conjugated with Fluorescein isothiocyanate (FITC) under optimum conditions. The reagent is free of unconjugated FITC.
Buffer	PBS, 15 mM Sodium azide and 0.2% (w/v) high-grade protease free BSA
Preservative	15 mM Sodium azide
Stabilizer	0.2% (w/v) high-grade protease free BSA
Concentration	0.1 mg/ml
Storage instruction	Aliquot and store in the dark at 2-8°C. Keep protected from prolonged exposure to light. Avoid repeated freeze/thaw cycles. Suggest spin the vial prior to opening. The antibody solution should be gently mixed before use.
Note	For laboratory research only, not for drug, diagnostic or other use.

Bioinformation

Gene Symbol	IGHE
Gene Full Name	immunoglobulin heavy constant epsilon
Research Area	Immune System antibody

Images



ARG63032 Mouse anti-Human IgE antibody [4H10] (FITC) FACS image

Flow Cytometry: Human peripheral blood cells stained with ARG63032 Mouse anti-Human IgE antibody [4H10] (FITC).