

ARG63035 Mouse anti-Human IgG (Fab) antibody [4A11]

Package: 100 µg
Store at: -20°C

Summary

Product Description	Mouse Monoclonal antibody [4A11] recognizes Human IgG (Fab)
Tested Reactivity	Hu
Tested Application	ELISA, FACS, WB
Specificity	The clone 4A11 reacts with Fab fragment of Human IgG.
Host	Mouse
Clonality	Monoclonal
Clone	4A11
Isotype	IgG2b
Target Name	IgG (Fab)
Species	Human
Immunogen	Purified human IgG.
Conjugation	Un-conjugated

Application Instructions

Application table	Application	Dilution
	ELISA	Assay-dependent
	FACS	1 - 5 µg/ml
	WB	Assay-dependent
Application Note	* The dilutions indicate recommended starting dilutions and the optimal dilutions or concentrations should be determined by the scientist.	

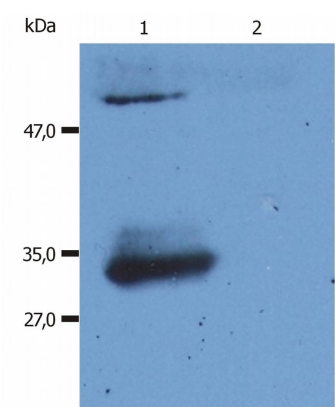
Properties

Form	Liquid
Purification	Purified from ascites by precipitation methods and ion exchange chromatography.
Purity	> 95% (by SDS-PAGE)
Buffer	PBS (pH 7.4) and 15 mM Sodium azide
Preservative	15 mM Sodium azide
Concentration	1 mg/ml
Storage instruction	For continuous use, store undiluted antibody at 2-8°C for up to a week. For long-term storage, aliquot and store at -20°C or below. Storage in frost free freezers is not recommended. Avoid repeated freeze/thaw cycles. Suggest spin the vial prior to opening. The antibody solution should be gently mixed before use.

Bioinformation

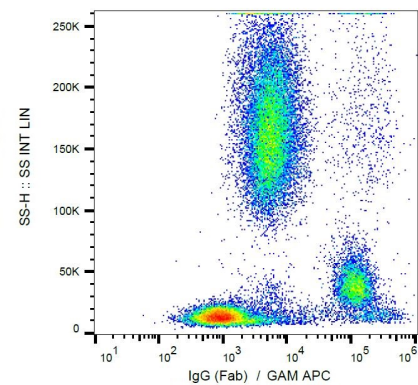
Background	Immunoglobulin G (IgG) is a 150 kDa soluble protein that serves as a major effector molecule of the humoral immune response in man. Its concentration in blood plasma of healthy individuals is approximately 10 g/l, which accounts for about 75% of the total plasma immunoglobulins. IgG has the highest stability of blood immunoglobulins (T1/2 = 21 days) and is able of placental transfer. IgG is secreted by plasma cells at a comparably high rate as other immunoglobulins.
Research Area	Immune System antibody

Images



ARG63035 Mouse anti-Human IgG (Fab) antibody [4A11] WB image

Western blot: 1) Normal human immunoglobulins, and 2) Normal bovine immunoglobulins stained with ARG63035 Mouse anti-Human IgG (Fab) antibody [4A11].



ARG63035 Mouse anti-Human IgG (Fab) antibody [4A11] FACS image

Flow Cytometry: Human peripheral blood cells stained with ARG63035 Mouse anti-Human IgG (Fab) antibody [4A11], followed by incubation with APC-labelled Goat anti-Mouse secondary antibody.