

ARG63037 Mouse anti-Human IgG (Fc) antibody [EM-07]

Package: 100 µg
Store at: -20°C

Summary

Product Description	Mouse Monoclonal antibody [EM-07] recognizes Human IgG
Tested Reactivity	Hu
Tested Application	ELISA, FACS, ICC/IF, WB
Host	Mouse
Clonality	Monoclonal
Clone	EM-07
Isotype	IgG1
Target Name	IgG (Fc)
Species	Human
Immunogen	Fusion protein of human IgG Fc fragment.
Target Ig	Human IgG
Conjugation	Un-conjugated

Application Instructions

Application table	Application	Dilution
	ELISA	Assay-dependent
	FACS	Assay-dependent
	ICC/IF	Assay-dependent
	WB	Assay-dependent
Application Note	<p>WB and ELISA: The peroxidase conjugate of this antibody is suitable for detection of human IgG Fc fragments. The clone EM-07 does not crossreact with IgM.</p> <p>* The dilutions indicate recommended starting dilutions and the optimal dilutions or concentrations should be determined by the scientist.</p>	

Properties

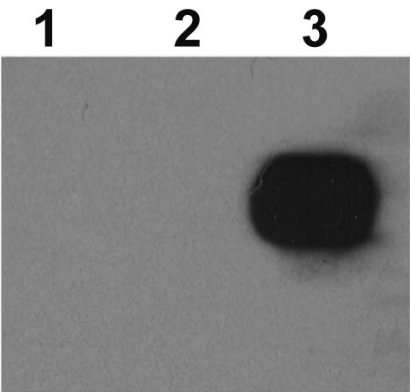
Form	Liquid
Purification	Purified from hybridoma culture supernatant by protein-A affinity chromatography.
Purity	> 95% (by SDS-PAGE)
Buffer	PBS (pH 7.4) and 15 mM Sodium azide
Preservative	15 mM Sodium azide
Concentration	1 mg/ml

Storage instruction	For continuous use, store undiluted antibody at 2-8°C for up to a week. For long-term storage, aliquot and store at -20°C or below. Storage in frost free freezers is not recommended. Avoid repeated freeze/thaw cycles. Suggest spin the vial prior to opening. The antibody solution should be gently mixed before use.
Note	For laboratory research only, not for drug, diagnostic or other use.

Bioinformation

Gene Symbol	IGHG1
Gene Full Name	immunoglobulin heavy constant gamma 1 (G1m marker)
Research Area	Controls and Markers antibody; Gene Regulation antibody; Immune System antibody

Images



ARG63037 Mouse anti-Human IgG (Fc) antibody [EM-07] WB image

Western blot: 1. IgG κ light chain 2. IgG λ light chain 3. IgG Fc fragmen purified from human serum stained with ARG63037 Mouse anti-Human IgG (Fc) antibody [EM-07].