

ARG63067 anti-MAP2ab antibody [MT-01]

Package: 100 µg
Store at: -20°C

Summary

Product Description	Mouse Monoclonal antibody [MT-01] recognizes MAP2ab
Tested Reactivity	Hu, Ms, Bov, Cat, Pig
Tested Application	ICC/IF, IP, WB
Specificity	The clone MT-01 reacts with molecule Microtubule Associated Protein 2ab (MAP2ab).
Host	Mouse
Clonality	Monoclonal
Clone	MT-01
Isotype	IgG1
Target Name	MAP2ab
Immunogen	Termostabile fraction of bovine brain microtubules (whole MAP2ab molecule).
Conjugation	Un-conjugated
Alternate Names	MAP2A; Microtubule-associated protein 2; MAP2B; MAP-2

Application Instructions

Application table	Application	Dilution
	ICC/IF	Assay-dependent
	IP	Assay-dependent
	WB	Assay-dependent
Application Note	* The dilutions indicate recommended starting dilutions and the optimal dilutions or concentrations should be determined by the scientist.	

Properties

Form	Liquid
Purification	Purified from ascites by protein-A affinity chromatography.
Purity	> 95% (by SDS-PAGE)
Buffer	PBS (pH 7.4) and 15 mM Sodium azide
Preservative	15 mM Sodium azide
Concentration	1 mg/ml
Storage instruction	For continuous use, store undiluted antibody at 2-8°C for up to a week. For long-term storage, aliquot and store at -20°C or below. Storage in frost free freezers is not recommended. Avoid repeated freeze/thaw cycles. Suggest spin the vial prior to opening. The antibody solution should be gently mixed before use.

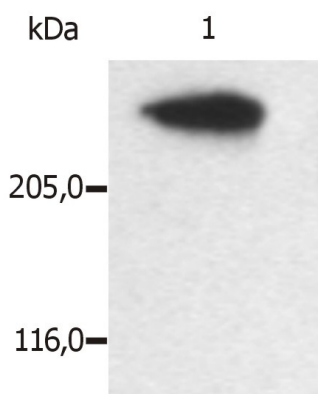
Note

For laboratory research only, not for drug, diagnostic or other use.

Bioinformation

Gene Symbol	MAP2
Gene Full Name	microtubule-associated protein 2
Background	MAP2a and 2b (270 kDa) being found mostly in dendrites, stabilize microtubules (shift the reaction kinetics in addition of new subunits and microtubule growth) and participate in determining the structure of different parts of vertebrate nerve cells.
Function	The exact function of MAP2 is unknown but MAPs may stabilize the microtubules against depolymerization. They also seem to have a stiffening effect on microtubules. [UniProt]
Highlight	Related products: MAP2 antibodies ; MAP2 Duos / Panels ; Anti-Mouse IgG secondary antibodies ; Related news: Astrocyte-to-neuron conversion for Parkinson's disease treatment
Research Area	Controls and Markers antibody; Neuroscience antibody; Signaling Transduction antibody; Neuron Marker antibody; Mature Neuron Marker antibody; Neurite Marker antibody
Calculated Mw	200 kDa
PTM	Phosphorylated at serine residues in K-X-G-S motifs by MAP/microtubule affinity-regulating kinase (MARK1 or MARK2), causing detachment from microtubules, and their disassembly (By similarity). Isoform 2 is probably phosphorylated by PKA at Ser-323, Ser-354 and Ser-386 and by FYN at Tyr-67. The interaction with KNDC1 enhances MAP2 threonine phosphorylation (By similarity).

Images



ARG63067 anti-MAP2ab antibody [MT-01] WB image

Western blot: Microtubules partially purified from porcine brain lysate stained with ARG63067 anti-MAP2ab antibody [MT-01].