

ARG63088 anti-PLAP / Placental alkaline phosphatase antibody [H7E8]

Package: 100 µg
Store at: -20°C

Summary

Product Description	Mouse Monoclonal antibody [H7E8] recognizes PLAP / Placental alkaline phosphatase
Tested Reactivity	Hu
Tested Application	ELISA, IHC-Fr, IHC-P, WB
Specificity	The clone H7E8 recognizes throphoblast-derived membrane-associated enzyme alkaline phosphatase.
Host	Mouse
Clonality	Monoclonal
Clone	H7E8
Isotype	IgG2a
Target Name	PLAP / Placental alkaline phosphatase
Immunogen	Purified placental alkaline phosphatase.
Conjugation	Un-conjugated
Alternate Names	PALP; PLAP; EC 3.1.3.1; Alkaline phosphatase Regan isozyme; Placental alkaline phosphatase 1; PLAP-1; Alkaline phosphatase, placental type; ALP

Application Instructions

Application table	Application	Dilution
	ELISA	Assay-dependent
	IHC-Fr	Assay-dependent
	IHC-P	10 µg/ml
	WB	Assay-dependent
Application Note	* The dilutions indicate recommended starting dilutions and the optimal dilutions or concentrations should be determined by the scientist.	

Properties

Form	Liquid
Purification	Purified from hybridoma culture supernatant by protein A-affinity chromatography.
Purity	> 95% (by SDS-PAGE)
Buffer	PBS (pH 7.4) and 15 mM Sodium azide
Preservative	15 mM Sodium azide
Concentration	1 mg/ml
Storage instruction	For continuous use, store undiluted antibody at 2-8°C for up to a week. For long-term storage, aliquot and store at -20°C or below. Storage in frost free freezers is not recommended. Avoid repeated

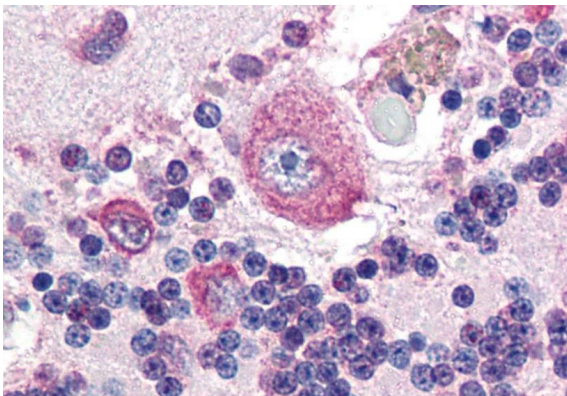
freeze/thaw cycles. Suggest spin the vial prior to opening. The antibody solution should be gently mixed before use.

Note For laboratory research only, not for drug, diagnostic or other use.

Bioinformation

Database links	GeneID: 250 Human Swiss-port # P05187 Human
Gene Symbol	ALPP
Gene Full Name	alkaline phosphatase, placental
Background	The protein encoded by this gene is an alkaline phosphatase, a metalloenzyme that catalyzes the hydrolysis of phosphoric acid monoesters. It belongs to a multigene family composed of four alkaline phosphatase isoenzymes. The enzyme functions as a homodimer and has a catalytic site containing one magnesium and two zinc ions, which are required for its enzymatic function. The protein is primarily expressed in placental and endometrial tissue; however, strong ectopic expression has been detected in ovarian adenocarcinoma, serous cystadenocarcinoma, and other ovarian cancer cells. [provided by RefSeq, Jan 2015]
Research Area	Cancer antibody; Cell Biology and Cellular Response antibody; Controls and Markers antibody
Calculated Mw	58 kDa

Images



ARG63088 anti-PLAP / Placental alkaline phosphatase antibody [H7E8] IHC-P image

Immunohistochemistry: Paraffin-embedded Human cerebellum tissue stained with ARG63088 anti-PLAP / Placental alkaline phosphatase antibody [H7E8].