

ARG63123 anti-CD20 antibody

Package: 100 µg
Store at: -20°C

Summary

Product Description	Goat Polyclonal antibody recognizes CD20
Tested Reactivity	Hu
Tested Application	IHC-P, WB
Specificity	Please note that both reported variants (NP_068769.2 and NP_690605.1) encode the same protein.
Host	Goat
Clonality	Polyclonal
Isotype	IgG
Target Name	CD20
Species	Human
Immunogen	CQDQESSPIENDSSP
Conjugation	Un-conjugated
Alternate Names	Bp35; LEU-16; B-lymphocyte surface antigen B1; B-lymphocyte antigen CD20; CD20; S7; CD antigen CD20; Leukocyte surface antigen Leu-16; B1; CVID5; Membrane-spanning 4-domains subfamily A member 1; MS4A2

Application Instructions

Application table	Application	Dilution
	IHC-P	6-7µg/ml
	WB	0.1-0.3µg/ml
Application Note	WB: Recommend incubate at RT for 1h. IHC-P: Antigen Retrieval: Steam tissue section in Citrate buffer (pH 6.0). * The dilutions indicate recommended starting dilutions and the optimal dilutions or concentrations should be determined by the scientist.	

Properties

Form	Liquid
Purification	Purified from goat serum by antigen affinity chromatography.
Buffer	Tris saline (pH 7.3), 0.02% Sodium azide and 0.5% BSA.
Preservative	0.02% Sodium azide
Stabilizer	0.5% BSA
Concentration	0.5 mg/ml
Storage instruction	For continuous use, store undiluted antibody at 2-8°C for up to a week. For long-term storage, aliquot and store at -20°C or below. Storage in frost free freezers is not recommended. Avoid repeated

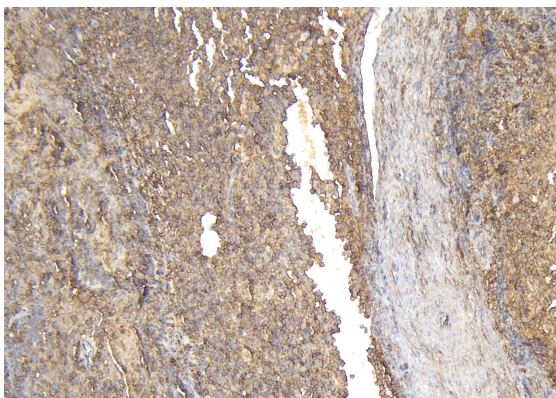
freeze/thaw cycles. Suggest spin the vial prior to opening. The antibody solution should be gently mixed before use.

Note For laboratory research only, not for drug, diagnostic or other use.

Bioinformation

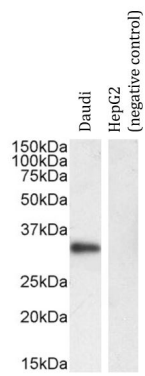
Database links	GeneID: 931 Human Swiss-port # P11836 Human
Background	CD20 is a member of the membrane-spanning 4A gene family. Members of this nascent protein family are characterized by common structural features and similar intron/exon splice boundaries and display unique expression patterns among hematopoietic cells and nonlymphoid tissues. This gene encodes a B-lymphocyte surface molecule which plays a role in the development and differentiation of B-cells into plasma cells. This family member is localized to 11q12, among a cluster of family members. Alternative splicing of this gene results in two transcript variants which encode the same protein. [provided by RefSeq, Jul 2008]
Function	CD20 is a B-lymphocyte-specific membrane protein. It plays a role in the regulation of cellular calcium influx necessary for the development, differentiation, and activation of B-lymphocytes (PubMed:3925015, PubMed:7684739, PubMed:12920111). Functions as a store-operated calcium (SOC) channel component promoting calcium influx after activation by the B-cell receptor/BCR (PubMed:7684739, PubMed:12920111, PubMed:18474602). [UniProt]
Highlight	Related products: CD20 antibodies ; CD20 ELISA Kits ; CD20 Duos / Panels ; Anti-Goat IgG secondary antibodies ; Related news: New antibody panels and duos for Tumor immune microenvironment Tumor-Infiltrating Lymphocytes (TILs) Exploring Antiviral Immune Response
Research Area	Cancer antibody; Developmental Biology antibody; Immune System antibody; B cell Marker antibody; Immature B Cell Marker antibody; Inflammatory Cell Marker antibody; Tumor-infiltrating Lymphocyte Study antibody
Calculated Mw	33 kDa
PTM	Phosphorylated. Might be functionally regulated by protein kinase(s).

Images



ARG63123 anti-CD20 antibody IHC-P image

Immunohistochemistry: Paraffin-embedded Human tonsil tissue. Antigen Retrieval: Steam tissue section in Citrate buffer (pH 6.0). The tissue section was stained with ARG63123 anti-CD20 antibody at 6 µg/ml.



ARG63123 anti-CD20 antibody WB image

Western blot: 35 µg of Daudi and HepG2 (negative control) cell lysates stained with ARG63123 anti-CD20 antibody at 0.01 µg/ml dilution and incubated at RT for 1 hour.