

## ARG63127 anti-PPP2CA / PPP2CB antibody

Package: 100 µg  
Store at: -20°C

### Summary

Product Description	Goat Polyclonal antibody recognizes PPP2CA / PPP2CB
Tested Reactivity	Hu, Ms, Rat, Pig
Predict Reactivity	Cow, Dog
Tested Application	IHC-P, WB
Specificity	Two variants NP_001009552.1 and NP_004147.1 represent identical protein.
Host	Goat
Clonality	Polyclonal
Isotype	IgG
Target Name	PPP2CA / PPP2CB
Species	Human
Immunogen	C-EPHVTRRTPDYFL
Conjugation	Un-conjugated
Alternate Names	Serine/threonine-protein phosphatase 2A catalytic subunit alpha isoform; PP2Ac; EC 3.1.3.16; PP2Calpha; Replication protein C; RP-C; PP2CA; PP2A-alpha

### Application Instructions

Application table	Application	Dilution
	IHC-P	10 µg/ml
	WB	1 - 3 µg/ml
Application Note	WB: Recommend incubate at RT for 1h. IHC-P: Antigen Retrieval: Steam tissue section in Citrate buffer (pH 6.0). * The dilutions indicate recommended starting dilutions and the optimal dilutions or concentrations should be determined by the scientist.	

### Properties

Form	Liquid
Purification	Purified from goat serum by antigen affinity chromatography.
Buffer	Tris saline (pH 7.3), 0.02% Sodium azide and 0.5% BSA.
Preservative	0.02% Sodium azide
Stabilizer	0.5% BSA
Concentration	0.5 mg/ml
Storage instruction	For continuous use, store undiluted antibody at 2-8°C for up to a week. For long-term storage, aliquot and store at -20°C or below. Storage in frost free freezers is not recommended. Avoid repeated

freeze/thaw cycles. Suggest spin the vial prior to opening. The antibody solution should be gently mixed before use.

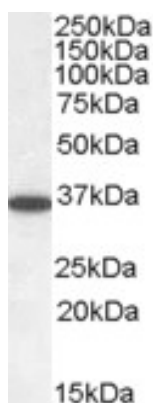
#### Note

For laboratory research only, not for drug, diagnostic or other use.

## Bioinformation

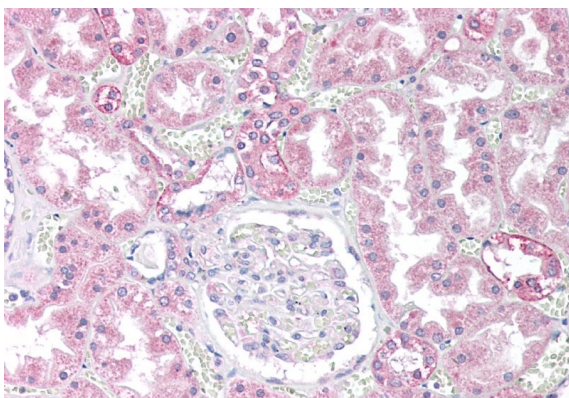
Gene Symbol	PPP2CA
Gene Full Name	protein phosphatase 2, catalytic subunit, alpha isozyme
Background	This gene encodes the phosphatase 2A catalytic subunit. Protein phosphatase 2A is one of the four major Ser/Thr phosphatases, and it is implicated in the negative control of cell growth and division. It consists of a common heteromeric core enzyme, which is composed of a catalytic subunit and a constant regulatory subunit, that associates with a variety of regulatory subunits. This gene encodes an alpha isoform of the catalytic subunit. [provided by RefSeq, Jul 2008]
Function	PP2A is the major phosphatase for microtubule-associated proteins (MAPs). PP2A can modulate the activity of phosphorylase B kinase casein kinase 2, mitogen-stimulated S6 kinase, and MAP-2 kinase. Cooperates with SGOL2 to protect centromeric cohesin from separase-mediated cleavage in oocytes specifically during meiosis I (By similarity). Can dephosphorylate SV40 large T antigen and p53/TP53. Activates RAF1 by dephosphorylating it at 'Ser-259'. [UniProt]
Research Area	Cancer antibody; Cell Biology and Cellular Response antibody; Developmental Biology antibody; Gene Regulation antibody; Neuroscience antibody; Signaling Transduction antibody
Calculated Mw	36 kDa
PTM	Reversibly methyl esterified on Leu-309 by leucine carboxyl methyltransferase 1 (LCMT1) and protein phosphatase methylesterase 1 (PPME1). Carboxyl methylation influences the affinity of the catalytic subunit for the different regulatory subunits, thereby modulating the PP2A holoenzyme's substrate specificity, enzyme activity and cellular localization. Phosphorylation of either threonine (by autophosphorylation-activated protein kinase) or tyrosine results in inactivation of the phosphatase. Auto-dephosphorylation has been suggested as a mechanism for reactivation. May be monoubiquitinated by NOSIP.

## Images



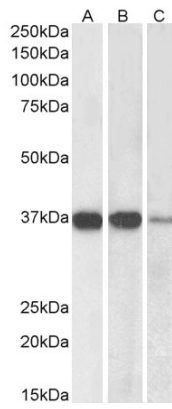
ARG63127 anti-PPP2CA / PPP2CB antibody WB image

Western Blot: Human Cerebellum lysate (35 µg protein in RIPA buffer) stained with ARG63127 anti-PPP2CA / PPP2CB antibody at 0.05 µg/ml dilution.



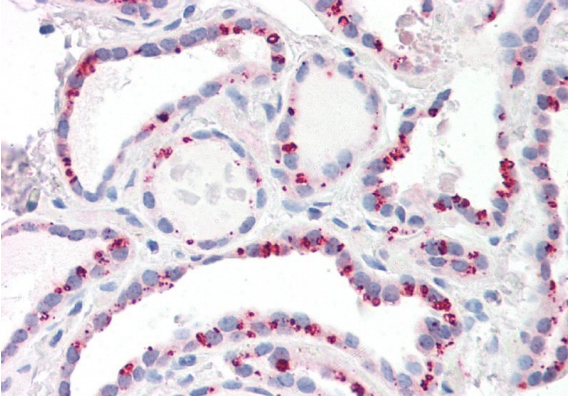
ARG63127 anti-PPP2CA / PPP2CB antibody IHC-P image

Immunohistochemistry: Paraffin-embedded Human kidney tissue. Antigen Retrieval: Steam tissue section in Citrate buffer (pH 6.0). The tissue section was stained with ARG63127 anti-PPP2CA / PPP2CB antibody at 10 µg/ml dilution followed by AP-staining.



ARG63127 anti-PPP2CA / PPP2CB antibody WB image

Western blot: 35 µg of Mouse (A), Rat (B) and Pig (C) brain lysates (in RIPA buffer) stained with ARG63127 anti-PPP2CA / PPP2CB antibody at 0.03 µg/ml dilution and incubated at RT for 1 hour.



ARG63127 anti-PPP2CA / PPP2CB antibody IHC-P image

Immunohistochemistry: Paraffin-embedded Human thyroid tissue. Antigen Retrieval: Steam tissue section in Citrate buffer (pH 6.0). The tissue section was stained with ARG63127 anti-PPP2CA / PPP2CB antibody at 10 µg/ml dilution followed by AP-staining.