

ARG63135 anti-LASP1 antibody

Package: 100 µg
Store at: -20°C

Summary

Product Description	Goat Polyclonal antibody recognizes LASP1
Tested Reactivity	Hu
Predict Reactivity	Ms, Rat, Dog, Pig
Tested Application	WB
Host	Goat
Clonality	Polyclonal
Isotype	IgG
Target Name	LASP1
Species	Human
Immunogen	NPNCARCGKIVYP
Conjugation	Un-conjugated
Alternate Names	MLN 50; LIM and SH3 domain protein 1; LASP-1; Lasp-1; Metastatic lymph node gene 50 protein; MLN50

Application Instructions

Application table	Application	Dilution
	WB	1 - 3 µg/ml
Application Note	WB: Recommend incubate at RT for 1h. * The dilutions indicate recommended starting dilutions and the optimal dilutions or concentrations should be determined by the scientist.	

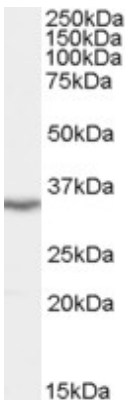
Properties

Form	Liquid
Purification	Purified from goat serum by antigen affinity chromatography.
Buffer	Tris saline (pH 7.3), 0.02% Sodium azide and 0.5% BSA.
Preservative	0.02% Sodium azide
Stabilizer	0.5% BSA
Concentration	0.5 mg/ml
Storage instruction	For continuous use, store undiluted antibody at 2-8°C for up to a week. For long-term storage, aliquot and store at -20°C or below. Storage in frost free freezers is not recommended. Avoid repeated freeze/thaw cycles. Suggest spin the vial prior to opening. The antibody solution should be gently mixed before use.
Note	For laboratory research only, not for drug, diagnostic or other use.

Bioinformation

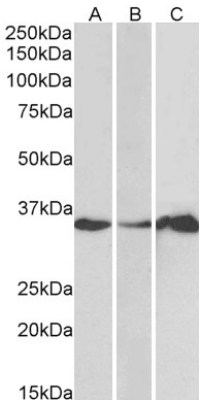
Database links	GeneID: 3927 Human Swiss-port # Q14847 Human
Background	This gene encodes a member of a LIM protein subfamily characterized by a LIM motif and a domain of Src homology region 3. The encoded protein functions as an actin-binding protein and possibly in cytoskeletal organization. [provided by RefSeq, Jan 2009]
Research Area	Signaling Transduction antibody
Calculated Mw	30 kDa

Images



ARG63135 anti-LASP1 antibody WB image

Western Blot: Human Brain (Cerebellum) extracts (RIPA buffer, 35 µg total protein per lane) stained with ARG63135 anti-LASP1 antibody at 0.1 µg/ml dilution.



ARG63135 anti-LASP1 antibody WB image

Western blot: 35 µg of Human cerebellum (A), colon (B) and duodenum (C) lysates (in RIPA buffer) stained with ARG63135 anti-LASP1 antibody at 1 µg/ml dilution and incubated at RT for 1 hour.