

ARG63156 anti-PLRG1 antibody

Package: 100 µg
Store at: -20°C

Summary

Product Description	Goat Polyclonal antibody recognizes PLRG1
Tested Reactivity	Hu, Ms
Predict Reactivity	Cow, Rat, Dog, Pig
Tested Application	IHC-P, WB
Specificity	This antibody is expected to recognise isoform 1 (NP_002660.1) and isoform 2 (NP_001188493.1).
Host	Goat
Clonality	Polyclonal
Isotype	IgG
Target Name	PLRG1
Species	Human
Immunogen	C-PVSWKPEIIKRRKF
Conjugation	Un-conjugated
Alternate Names	PRL1; Pleiotropic regulator 1; PRP46; TANGO4; PRPF46; Cwc1

Application Instructions

Application table	Application	Dilution
	IHC-P	5 µg/ml
	WB	0.1 - 0.3 µg/ml
Application Note	WB: Recommend incubate at RT for 1h. IHC-P: Antigen Retrieval: Steam tissue section in Citrate buffer (pH 6.0). * The dilutions indicate recommended starting dilutions and the optimal dilutions or concentrations should be determined by the scientist.	

Properties

Form	Liquid
Purification	Purified from goat serum by antigen affinity chromatography.
Buffer	Tris saline (pH 7.3), 0.02% Sodium azide and 0.5% BSA.
Preservative	0.02% Sodium azide
Stabilizer	0.5% BSA
Concentration	0.5 mg/ml
Storage instruction	For continuous use, store undiluted antibody at 2-8°C for up to a week. For long-term storage, aliquot and store at -20°C or below. Storage in frost free freezers is not recommended. Avoid repeated freeze/thaw cycles. Suggest spin the vial prior to opening. The antibody solution should be gently mixed

before use.

Note

For laboratory research only, not for drug, diagnostic or other use.

Bioinformation

Database links

[GeneID: 53317 Mouse](#)

[GeneID: 5356 Human](#)

[Swiss-port # O43660 Human](#)

[Swiss-port # Q922V4 Mouse](#)

Background

This gene encodes a core component of the cell division cycle 5-like (CDC5L) complex. The CDC5L complex is part of the spliceosome and is required for pre-mRNA splicing. The encoded protein plays a critical role in alternative splice site selection. Alternatively spliced transcript variants encoding multiple isoforms have been observed for this gene. [provided by RefSeq, Jan 2011]

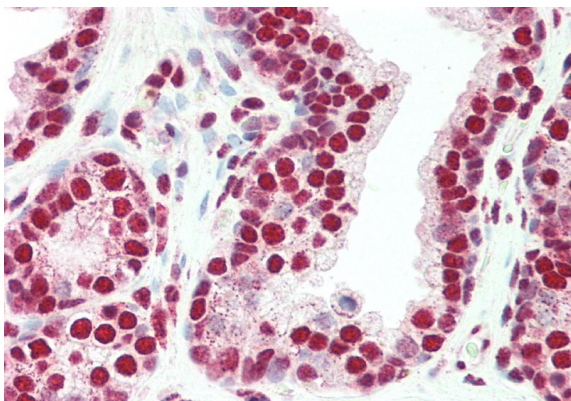
Research Area

Gene Regulation antibody

Calculated Mw

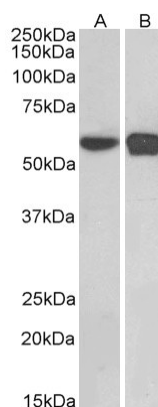
57 kDa

Images



ARG63156 anti-PLRG1 antibody IHC-P image

Immunohistochemistry: Paraffin-embedded Human prostate tissue. Antigen Retrieval: Steam tissue section in Citrate buffer (pH 6.0). The tissue section was stained with ARG63156 anti-PLRG1 antibody at 5 µg/ml dilution followed by AP-staining.



ARG63156 anti-PLRG1 antibody WB image

Western blot: 35 µg of HEK293 (A) and NIH/3T3 (B) nuclear lysates (in RIPA buffer) stained with ARG63156 anti-PLRG1 antibody at 0.1 µg/ml dilution and incubated at RT for 1 hour.