

ARG63162 anti-PPP2R5D antibody

Package: 100 µg
Store at: -20°C

Summary

Product Description	Goat Polyclonal antibody recognizes PPP2R5D
Tested Reactivity	Hu
Predict Reactivity	Ms, Rat, Cow, Dog, Pig
Tested Application	WB
Specificity	This antibody is expected to recognise all three reported isoforms (NP_006236.1; NP_851307.1; NP_851308.1).
Host	Goat
Clonality	Polyclonal
Isotype	IgG
Target Name	PPP2R5D
Species	Human
Immunogen	C-KRAEEFLTASQEAL
Conjugation	Un-conjugated
Alternate Names	PP2A B subunit isoform B'-delta; B56D; Serine/threonine-protein phosphatase 2A 56 kDa regulatory subunit delta isoform; MRD35; PP2A B subunit isoform R5-delta; PP2A B subunit isoform B56-delta; PP2A B subunit isoform PR61-delta

Application Instructions

Application table	Application	Dilution
	WB	1 - 3 µg/ml
Application Note	WB: Recommend incubate at RT for 1h. * The dilutions indicate recommended starting dilutions and the optimal dilutions or concentrations should be determined by the scientist.	

Properties

Form	Liquid
Purification	Purified from goat serum by antigen affinity chromatography.
Buffer	Tris saline (pH 7.3), 0.02% Sodium azide and 0.5% BSA.
Preservative	0.02% Sodium azide
Stabilizer	0.5% BSA
Concentration	0.5 mg/ml
Storage instruction	For continuous use, store undiluted antibody at 2-8°C for up to a week. For long-term storage, aliquot and store at -20°C or below. Storage in frost free freezers is not recommended. Avoid repeated

freeze/thaw cycles. Suggest spin the vial prior to opening. The antibody solution should be gently mixed before use.

Note

For laboratory research only, not for drug, diagnostic or other use.

Bioinformation

Database links

[GeneID: 5528 Human](#)

[Swiss-port # Q14738 Human](#)

Background

The product of this gene belongs to the phosphatase 2A regulatory subunit B family. Protein phosphatase 2A is one of the four major Ser/Thr phosphatases, and it is implicated in the negative control of cell growth and division. It consists of a common heteromeric core enzyme, which is composed of a catalytic subunit and a constant regulatory subunit, that associates with a variety of regulatory subunits. The B regulatory subunit might modulate substrate selectivity and catalytic activity. This gene encodes a delta isoform of the regulatory subunit B56 subfamily. Alternatively spliced transcript variants encoding different isoforms have been identified. [provided by RefSeq, Jul 2008]

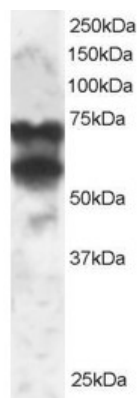
Research Area

Neuroscience antibody; Signaling Transduction antibody

Calculated Mw

70 kDa

Images



ARG63162 anti-PPP2R5D antibody WB image

Western Blot: 293 lysate (RIPA buffer, 30µg total protein per lane) stained with ARG63162 anti-PPP2R5D antibody at 2 µg/ml dilution.