

ARG63166 anti-SET / I2 alpha PP2A antibody

Package: 100 µg
Store at: -20°C

Summary

Product Description	Goat Polyclonal antibody recognizes SET / I2 alpha PP2A
Tested Reactivity	Hu
Predict Reactivity	Cow
Tested Application	IHC-P, WB
Specificity	This antibody is expected to recognize isoform 2 (NP_003002.2).
Host	Goat
Clonality	Polyclonal
Isotype	IgG
Target Name	SET / I2 alpha PP2A
Species	Human
Immunogen	SAPAAKVSKKELNS-C
Conjugation	Un-conjugated
Alternate Names	I-2PP2A; Template-activating factor I; I2PP2A; Inhibitor of granzyme A-activated DNase; Protein SET; TAF-IBETA; IPP2A2; TAF-I; PHAPII; 2PP2A; Phosphatase 2A inhibitor I2PP2A; IGAAD; HLA-DR-associated protein II

Application Instructions

Application table	Application	Dilution
	IHC-P	Assay - dependent
	WB	0.3 - 1 µg/ml
Application Note	WB: Recommend incubate at RT for 1h. IHC-P: Antigen Retrieval: Steam tissue section in Citrate buffer (pH 6.0). * The dilutions indicate recommended starting dilutions and the optimal dilutions or concentrations should be determined by the scientist.	

Properties

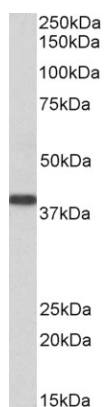
Form	Liquid
Purification	Purified from goat serum by antigen affinity chromatography.
Buffer	Tris saline (pH 7.3), 0.02% Sodium azide and 0.5% BSA.
Preservative	0.02% Sodium azide
Stabilizer	0.5% BSA
Concentration	0.5 mg/ml

Storage instruction	For continuous use, store undiluted antibody at 2-8°C for up to a week. For long-term storage, aliquot and store at -20°C or below. Storage in frost free freezers is not recommended. Avoid repeated freeze/thaw cycles. Suggest spin the vial prior to opening. The antibody solution should be gently mixed before use.
Note	For laboratory research only, not for drug, diagnostic or other use.

Bioinformation

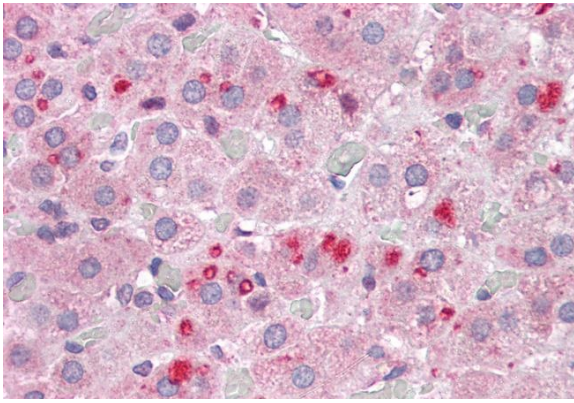
Database links	GeneID: 6418 Human Swiss-port # Q01105 Human
Background	The protein encoded by this gene inhibits acetylation of nucleosomes, especially histone H4, by histone acetylases (HAT). This inhibition is most likely accomplished by masking histone lysines from being acetylated, and the consequence is to silence HAT-dependent transcription. The encoded protein is part of a complex localized to the endoplasmic reticulum but is found in the nucleus and inhibits apoptosis following attack by cytotoxic T lymphocytes. This protein can also enhance DNA replication of the adenovirus genome. Several transcript variants encoding different isoforms have been found for this gene. [provided by RefSeq, Oct 2011]
Research Area	Cancer antibody; Cell Biology and Cellular Response antibody; Gene Regulation antibody; Immune System antibody; Neuroscience antibody; Signaling Transduction antibody
Calculated Mw	33 kDa
PTM	<p>Isoform 2 is phosphorylated on Ser-15 and Ser-24.</p> <p>Isoform 2 is acetylated on Lys-11.</p> <p>Some glutamate residues are glycyated by TTLL8. This modification occurs exclusively on glutamate residues and results in a glycine chain on the gamma-carboxyl group (By similarity).</p> <p>N-terminus of isoform 1 is methylated by METTL11A/NTM1. Mainly trimethylated (By similarity).</p> <p>Isoform 2 is cleaved after Lys-176 by GZMA. The cleavage inhibits its nucelosome assembly activity and disrupts the inhibition on NME1.</p>

Images



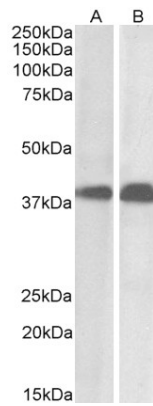
ARG63166 anti-SET / I2 alpha PP2A antibody WB image

Western Blot: Human Kidney lysate (35 µg protein in RIPA buffer) stained with ARG63166 anti-SET / I2 alpha PP2A antibody at 0.3 µg/ml dilution.



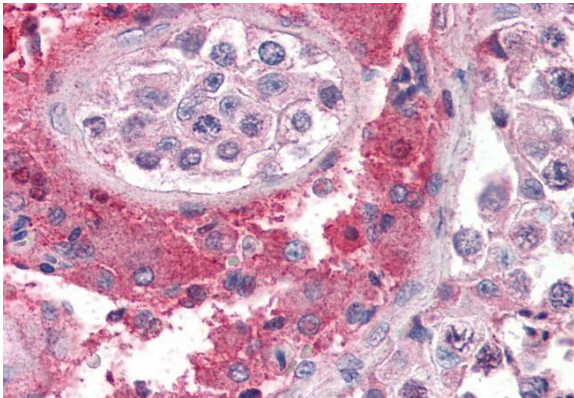
ARG63166 anti-SET / I2 alpha PP2A antibody IHC-P image

Immunohistochemistry: Paraffin-embedded Human adrenal gland tissue. Antigen Retrieval: Steam tissue section in Citrate buffer (pH 6.0). The tissue section was stained with ARG63166 anti-SET / I2 alpha PP2A antibody at 3.75 µg/ml dilution followed by AP-staining.



ARG63166 anti-SET / I2 alpha PP2A antibody WB image

Western blot: 35 µg of Daudi (A) and MOLT-4 (B) cell lysates (in RIPA buffer) stained with ARG63166 anti-SET / I2 alpha PP2A antibody at 0.01 µg/ml dilution and incubated at RT for 1 hour.



ARG63166 anti-SET / I2 alpha PP2A antibody IHC-P image

Immunohistochemistry: Paraffin-embedded Human testis tissue. Antigen Retrieval: Steam tissue section in Citrate buffer (pH 6.0). The tissue section was stained with ARG63166 anti-SET / I2 alpha PP2A antibody at 3.75 µg/ml dilution followed by AP-staining.