

ARG63176 anti-ELMO1 antibody

Package: 100 µg, 50 µg
Store at: -20°C

Summary

Product Description	Goat Polyclonal antibody recognizes ELMO1
Tested Reactivity	Hu, Ms, Rat
Predict Reactivity	Cow, Dog, Zfsh
Tested Application	IP, WB
Specificity	This antibody is expected to recognise both human isoforms of this protein. NP_569709.1 and NP_001034548.1 represent the same isoform.
Host	Goat
Clonality	Polyclonal
Isotype	IgG
Target Name	ELMO1
Species	Human
Immunogen	PKEPSNYDFVYDCN
Conjugation	Un-conjugated
Alternate Names	Protein ced-12 homolog; ELMO-1; CED12; CED-12; Engulfment and cell motility protein 1

Application Instructions

Application table	Application	Dilution
	IP	Assay - dependent
	WB	0.1 - 0.3 µg/ml
Application Note	WB: Recommend incubate at RT for 1h. * The dilutions indicate recommended starting dilutions and the optimal dilutions or concentrations should be determined by the scientist.	

Properties

Form	Liquid
Purification	Purified from goat serum by antigen affinity chromatography.
Buffer	Tris saline (pH 7.3), 0.02% Sodium azide and 0.5% BSA.
Preservative	0.02% Sodium azide
Stabilizer	0.5% BSA
Concentration	0.5 mg/ml
Storage instruction	For continuous use, store undiluted antibody at 2-8°C for up to a week. For long-term storage, aliquot and store at -20°C or below. Storage in frost free freezers is not recommended. Avoid repeated freeze/thaw cycles. Suggest spin the vial prior to opening. The antibody solution should be gently mixed

before use.

Note

For laboratory research only, not for drug, diagnostic or other use.

Bioinformation

Database links

[GeneID: 140580 Mouse](#)

[GeneID: 9844 Human](#)

[Swiss-port # Q8BPU7 Mouse](#)

[Swiss-port # Q92556 Human](#)

Background

This gene encodes a member of the engulfment and cell motility protein family. These proteins interact with dedicator of cytokinesis proteins to promote phagocytosis and cell migration. Increased expression of this gene and dedicator of cytokinesis 1 may promote glioma cell invasion, and single nucleotide polymorphisms in this gene may be associated with diabetic nephropathy. Alternatively spliced transcript variants encoding multiple isoforms have been observed for this gene. [provided by RefSeq, Apr 2011]

Research Area

Cancer antibody; Cell Biology and Cellular Response antibody; Cell Death antibody; Metabolism antibody; Signaling Transduction antibody

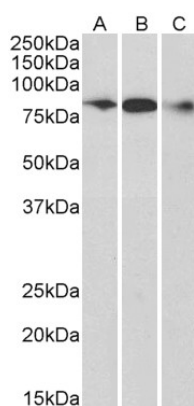
Calculated Mw

84 kDa

PTM

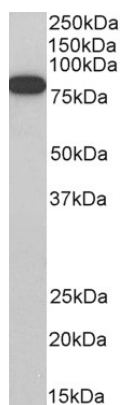
Phosphorylated by HCK.

Images



ARG63176 anti-ELMO1 antibody WB image

Western blot: 35 µg of Human frontal cortex (A), Mouse brain (B) and Rat brain (C) lysates (in RIPA buffer) stained with ARG63176 anti-ELMO1 antibody at 0.3 µg/ml dilution and incubated at RT for 1 hour.



ARG63176 anti-ELMO1 antibody WB image

Western blot: 35 µg of Jurkat cell lysate (in RIPA buffer) stained with ARG63176 anti-ELMO1 antibody at 0.3 µg/ml dilution and incubated at RT for 1 hour.