

## ARG63178 anti-ELMO2 antibody

Package: 100 µg  
Store at: -20°C

### Summary

Product Description	Goat Polyclonal antibody recognizes ELMO2
Tested Reactivity	Hu
Predict Reactivity	Ms, Rat, Cow, Dog, Pig
Tested Application	IHC-P, WB
Specificity	NP_877496.1 and NP_573403.1 are variants that encode the same protein.
Host	Goat
Clonality	Polyclonal
Isotype	IgG
Target Name	ELMO2
Species	Human
Immunogen	C-PKEPSSYDFVYHYG
Conjugation	Un-conjugated
Alternate Names	CED12; Protein ced-12 homolog A; hCed-12A; Engulfment and cell motility protein 2; CED-12; ELMO-2

### Application Instructions

Application table	Application	Dilution
	IHC-P	3 - 6 µg/ml
	WB	1 - 3 µg/ml
Application Note	IHC-P: Antigen Retrieval: Steam tissue section in Citrate buffer (pH 6.0). WB: Recommend incubate at RT for 1h. * The dilutions indicate recommended starting dilutions and the optimal dilutions or concentrations should be determined by the scientist.	

### Properties

Form	Liquid
Purification	Purified from goat serum by antigen affinity chromatography.
Buffer	Tris saline (pH 7.3), 0.02% Sodium azide and 0.5% BSA.
Preservative	0.02% Sodium azide
Stabilizer	0.5% BSA
Concentration	0.5 mg/ml
Storage instruction	For continuous use, store undiluted antibody at 2-8°C for up to a week. For long-term storage, aliquot and store at -20°C or below. Storage in frost free freezers is not recommended. Avoid repeated freeze/thaw cycles. Suggest spin the vial prior to opening. The antibody solution should be gently mixed

before use.

Note

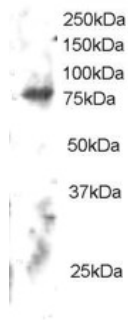
For laboratory research only, not for drug, diagnostic or other use.

## Bioinformation

---

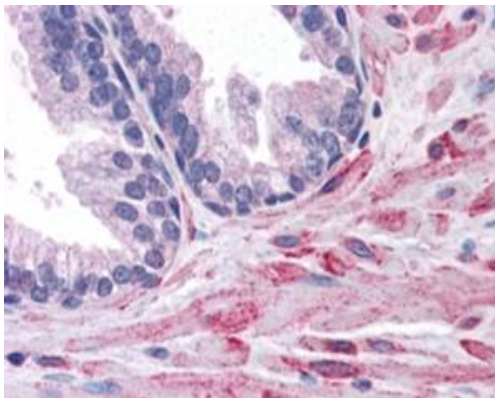
Database links	<a href="#">GeneID: 63916 Human</a>  <a href="#">Swiss-port # Q96JJ3 Human</a>
Background	The protein encoded by this gene interacts with the dedicator of cyto-kinesis 1 protein. Similarity to a C. elegans protein suggests that this protein may function in phagocytosis of apoptotic cells and in cell migration. Alternative splicing results in multiple transcript variants encoding the same protein. [provided by RefSeq, Jul 2008]
Research Area	Cell Biology and Cellular Response antibody; Cell Death antibody; Metabolism antibody
Calculated Mw	83 kDa

## Images



ARG63178 anti-ELMO2 antibody WB image

Western Blot: Human Brain lysate (RIPA buffer, 30µg total protein per lane) stained with ARG63178 anti-ELMO2 antibody at 2 µg/ml dilution.



ARG63178 anti-ELMO2 antibody IHC-P image

Immunohistochemistry: paraffin embedded Human Prostate. (Steamed antigen retrieval with citrate buffer pH 6) stained with ARG63178 anti-ELMO2 antibody at 3.8 µg/ml dilution followed by AP-staining.