

ARG63186 anti-DAPP1 antibody

Package: 100 µg
Store at: -20°C

Summary

Product Description	Goat Polyclonal antibody recognizes DAPP1
Tested Reactivity	Hu
Tested Application	WB
Specificity	This antibody was raised against the C-terminus of NP_055210.1. However, NCBI has changed the version to NP_055210.2 thus losing the C-terminal epitope.
Host	Goat
Clonality	Polyclonal
Isotype	IgG
Target Name	DAPP1
Species	Human
Immunogen	SALCISPEEKTDHK
Conjugation	Un-conjugated
Alternate Names	hDAPP1; B-cell adapter molecule of 32 kDa; Dual adapter for phosphotyrosine and 3-phosphotyrosine and 3-phosphoinositide; BAM32; B lymphocyte adapter protein Bam32

Application Instructions

Application table	Application	Dilution
	WB	0.5 - 1 µg/ml
Application Note	WB: Recommend incubate at RT for 1h. * The dilutions indicate recommended starting dilutions and the optimal dilutions or concentrations should be determined by the scientist.	

Properties

Form	Liquid
Purification	Purified from goat serum by antigen affinity chromatography.
Buffer	Tris saline (pH 7.3), 0.02% Sodium azide and 0.5% BSA.
Preservative	0.02% Sodium azide
Stabilizer	0.5% BSA
Concentration	0.5 mg/ml
Storage instruction	For continuous use, store undiluted antibody at 2-8°C for up to a week. For long-term storage, aliquot and store at -20°C or below. Storage in frost free freezers is not recommended. Avoid repeated freeze/thaw cycles. Suggest spin the vial prior to opening. The antibody solution should be gently mixed before use.

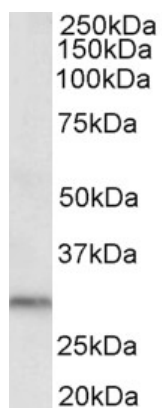
Note

For laboratory research only, not for drug, diagnostic or other use.

Bioinformation

Database links	GeneID: 27071 Human Swiss-port # Q9UN19 Human
Gene Symbol	DAPP1
Gene Full Name	dual adaptor of phosphotyrosine and 3-phosphoinositides
Function	May act as a B-cell-associated adapter that regulates B-cell antigen receptor (BCR)-signaling downstream of PI3K. [UniProt]
Research Area	Immune System antibody; Signaling Transduction antibody
Calculated Mw	32 kDa
PTM	Phosphorylated on tyrosine residues.

Images



ARG63186 anti-DAPP1 antibody WB image

Western Blot: Human Kidney lysate (35 µg protein in RIPA buffer) stained with ARG63186 anti-DAPP1 antibody at 0.5 µg/ml dilution.