

## ARG63205 anti-GRB7 antibody

Package: 100 µg  
Store at: -20°C

### Summary

Product Description	Goat Polyclonal antibody recognizes GRB7
Tested Reactivity	Hu
Tested Application	WB
Specificity	This antibody recognises the longer isoform of this protein in A431 lysate.
Host	Goat
Clonality	Polyclonal
Isotype	IgG
Target Name	GRB7
Species	Human
Immunogen	ELDLSPPHLSSSPE-C
Conjugation	Un-conjugated
Alternate Names	Epidermal growth factor receptor GRB-7; Growth factor receptor-bound protein 7; B47; GRB7 adapter protein

### Application Instructions

Application table	Application	Dilution
	WB	1 - 3 µg/ml
Application Note	WB: Recommend incubate at RT for 1h. * The dilutions indicate recommended starting dilutions and the optimal dilutions or concentrations should be determined by the scientist.	

### Properties

Form	Liquid
Purification	Purified from goat serum by antigen affinity chromatography.
Buffer	Tris saline (pH 7.3), 0.02% Sodium azide and 0.5% BSA.
Preservative	0.02% Sodium azide
Stabilizer	0.5% BSA
Concentration	0.5 mg/ml
Storage instruction	For continuous use, store undiluted antibody at 2-8°C for up to a week. For long-term storage, aliquot and store at -20°C or below. Storage in frost free freezers is not recommended. Avoid repeated freeze/thaw cycles. Suggest spin the vial prior to opening. The antibody solution should be gently mixed before use.
Note	For laboratory research only, not for drug, diagnostic or other use.

Bioinformation

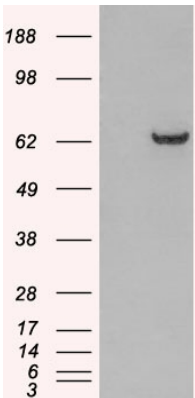
Database links	<a href="#">GeneID: 2886 Human</a>  <a href="#">Swiss-port # Q14451 Human</a>
Background	The product of this gene belongs to a small family of adapter proteins that are known to interact with a number of receptor tyrosine kinases and signaling molecules. This gene encodes a growth factor receptor-binding protein that interacts with epidermal growth factor receptor (EGFR) and ephrin receptors. The protein plays a role in the integrin signaling pathway and cell migration by binding with focal adhesion kinase (FAK). Several transcript variants encoding two different isoforms have been found for this gene. [provided by RefSeq, Jun 2011]
Research Area	Signaling Transduction antibody
Calculated Mw	60 kDa
PTM	Phosphorylated on serine and threonine residues in response to heregulin. Phosphorylated on tyrosine residues by TEK/TIE2. Phosphorylated on tyrosine residues in response to NTN1 signaling. Phosphorylation promotes stress granule disassembly during recovery after cellular stress (By similarity). Phosphorylated on tyrosine residues by PTK2/FAK1, and possibly also other kinases. Phosphorylation is enhanced by activation of receptor kinases. Tyrosine phosphorylation is essential for activation of down-stream protein kinases.

Images



ARG63205 anti-GRB7 antibody WB image

Western Blot: A431 lysate (RIPA buffer, 30µg total protein per lane) stained with ARG63205 anti-GRB7 antibody at 2 µg/ml dilution.



ARG63205 anti-GRB7 antibody WB image

Western Blot: 1). Mock transfection; 2) GRB7 (RC215362) expressing plasmid transfected HEK293 cell lysate stained with ARG63205 anti-GRB7 antibody