

ARG63210 anti-TFEB antibody

Package: 100 µg
Store at: -20°C

Summary

Product Description	Goat Polyclonal antibody recognizes TFEB
Tested Reactivity	Hu
Predict Reactivity	Ms, Rat, Cow, Dog, Pig
Tested Application	WB
Host	Goat
Clonality	Polyclonal
Isotype	IgG
Target Name	TFEB
Species	Human
Immunogen	ASRIGLRMQLMRE-C
Conjugation	Un-conjugated
Alternate Names	Class E basic helix-loop-helix protein 35; BHLHE35; ALPHATFEB; bHLHe35; TCFEF; Transcription factor EB

Application Instructions

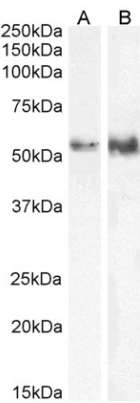
Application table	Application	Dilution
	WB	0.3 - 1 µg/ml
Application Note	WB: Recommend incubate at RT for 1h. * The dilutions indicate recommended starting dilutions and the optimal dilutions or concentrations should be determined by the scientist.	

Properties

Form	Liquid
Purification	Purified from goat serum by antigen affinity chromatography.
Buffer	Tris saline (pH 7.3), 0.02% Sodium azide and 0.5% BSA.
Preservative	0.02% Sodium azide
Stabilizer	0.5% BSA
Concentration	0.5 mg/ml
Storage instruction	For continuous use, store undiluted antibody at 2-8°C for up to a week. For long-term storage, aliquot and store at -20°C or below. Storage in frost free freezers is not recommended. Avoid repeated freeze/thaw cycles. Suggest spin the vial prior to opening. The antibody solution should be gently mixed before use.
Note	For laboratory research only, not for drug, diagnostic or other use.

Database links	GeneID: 7942 Human Swiss-port # P19484 Human
Gene Symbol	TFEB
Gene Full Name	transcription factor EB
Function	Transcription factor that specifically recognizes and binds E-box sequences (5'-CANNTG-3'). Efficient DNA-binding requires dimerization with itself or with another MiT/TFE family member such as TFE3 or MITF. In association with TFE3, activates the expression of CD40L in T-cells, thereby playing a role in T-cell-dependent antibody responses in activated CD4(+) T-cells and thymus-dependent humoral immunity. Specifically recognizes and binds the CLEAR-box sequence (5'-GTCACGTGAC-3') present in the regulatory region of many lysosomal genes, leading to activate their expression. It thereby plays a central role in expression of lysosomal genes. Acts as a positive regulator of autophagy by promoting expression of genes involved in autophagy. Specifically recognizes the gamma-E3 box, a subset of E-boxes, present in the heavy-chain immunoglobulin enhancer. Plays a role in the signal transduction processes required for normal vascularization of the placenta. [UniProt]
Research Area	Controls and Markers antibody; Gene Regulation antibody
Calculated Mw	53 kDa
PTM	Sumoylated; does not affect dimerization with MITF.

Images



ARG63210 anti-TFEB antibody WB image

Western blot: 35 µg of HeLa (A) and Jurkat (B) cell lysates (in RIPA buffer) stained with ARG63210 anti-TFEB antibody at 0.5 µg/ml (A) and 0.3 µg/ml (B) dilutions and incubated at RT for 1 hour.



ARG63210 anti-TFEB antibody WB image

Western blot: 35 µg of Human thymus lysate (in RIPA buffer) stained with ARG63210 anti-TFEB antibody at 1.0 µg/ml dilution and incubated at RT for 1 hour.