

## ARG63254 anti-ARIH1 / HHARI antibody

Package: 100 µg  
Store at: -20°C

### Summary

Product Description	Goat Polyclonal antibody recognizes ARIH1 / HHARI
Tested Reactivity	Hu
Predict Reactivity	Ms, Cow
Tested Application	IHC-P, WB
Host	Goat
Clonality	Polyclonal
Isotype	IgG
Target Name	ARIH1 / HHARI
Species	Human
Immunogen	C-HEGYEKDLWEYIED
Conjugation	Un-conjugated
Alternate Names	UbcH7-binding protein; HARI; EC 6.3.2.-; E3 ubiquitin-protein ligase ARIH1; ARI-1; Ubiquitin-conjugating enzyme E2-binding protein 1; Protein ariadne-1 homolog; MOP-6; H7-AP2; UbcM4-interacting protein; HHARI; ARI; Monocyte protein 6; UBCH7BP

### Application Instructions

Application table	Application	Dilution
	IHC-P	5 µg/ml
	WB	0.2 - 1 µg/ml
Application Note	WB: Recommend incubate at RT for 1h. IHC-P: Antigen Retrieval: Steam tissue section in Citrate buffer (pH 6.0). * The dilutions indicate recommended starting dilutions and the optimal dilutions or concentrations should be determined by the scientist.	

### Properties

Form	Liquid
Purification	Purified from goat serum by antigen affinity chromatography.
Buffer	Tris saline (pH 7.3), 0.02% Sodium azide and 0.5% BSA.
Preservative	0.02% Sodium azide
Stabilizer	0.5% BSA
Concentration	0.5 mg/ml
Storage instruction	For continuous use, store undiluted antibody at 2-8°C for up to a week. For long-term storage, aliquot and store at -20°C or below. Storage in frost free freezers is not recommended. Avoid repeated

freeze/thaw cycles. Suggest spin the vial prior to opening. The antibody solution should be gently mixed before use.

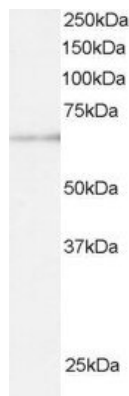
#### Note

For laboratory research only, not for drug, diagnostic or other use.

## Bioinformation

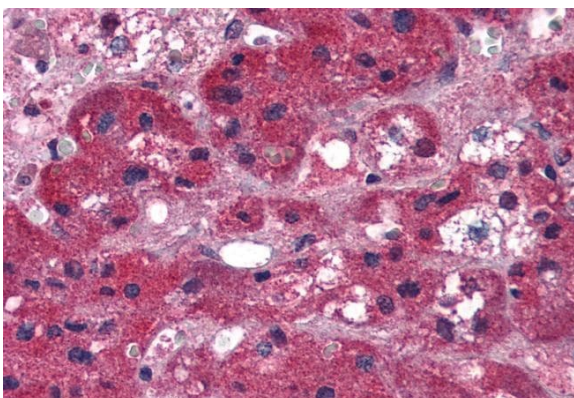
Database links	<a href="#">GeneID: 25820 Human</a> <a href="#">Swiss-port # Q9Y4X5 Human</a>
Gene Symbol	ARIH1
Gene Full Name	ariadne RBR E3 ubiquitin protein ligase 1
Function	E3 ubiquitin-protein ligase, which catalyzes polyubiquitination of target proteins together with ubiquitin-conjugating enzyme E2 UBE2L3. May play a role in protein translation by mediating polyubiquitination of EIF4E2, leading to its subsequent degradation. Acts as the ligase involved in ISGylation of EIF4E2. [UniProt]
Research Area	Cell Biology and Cellular Response antibody; Metabolism antibody; Signaling Transduction antibody
Calculated Mw	64 kDa

## Images



ARG63254 anti-ARIH1 / HHARI antibody WB image

Western Blot: U937 lysate (RIPA buffer, 30µg total protein per lane) stained with ARG63254 anti-ARIH1 / HHARI antibody at 0.5 µg/ml dilution.



ARG63254 anti-ARIH1 / HHARI antibody IHC-P image

Immunohistochemistry: Paraffin-embedded Human adrenal gland tissue. Antigen Retrieval: Steam tissue section in Citrate buffer (pH 6.0). The tissue section was stained with ARG63254 anti-ARIH1 / HHARI antibody at 5 µg/ml dilution followed by AP-staining.