

## ARG63295 anti-RNF13 / RZF antibody

Package: 100 µg  
Store at: -20°C

### Summary

Product Description	Goat Polyclonal antibody recognizes RNF13 / RZF
Tested Reactivity	Hu
Predict Reactivity	Ms, Rat, Cow, Dog, Pig
Tested Application	FACS, IHC, WB
Specificity	Reported variants represent identical protein (NP_009213.1; NP_899237.1).
Host	Goat
Clonality	Polyclonal
Isotype	IgG
Target Name	RNF13 / RZF
Species	Human
Immunogen	C-PNGERDYNIAITV
Conjugation	Un-conjugated
Alternate Names	RZF; E3 ubiquitin-protein ligase RNF13; RING finger protein 13; EC 6.3.2.-

### Application Instructions

Application table	Application	Dilution
	FACS	10 µg/ml
	IHC	Assay - dependent
	WB	2 µg/ml
	Application Note	
	WB: Recommend incubate at RT for 1h. * The dilutions indicate recommended starting dilutions and the optimal dilutions or concentrations should be determined by the scientist.	

### Properties

Form	Liquid
Purification	Purified from goat serum by antigen affinity chromatography.
Buffer	Tris saline (pH 7.3), 0.02% Sodium azide and 0.5% BSA.
Preservative	0.02% Sodium azide
Stabilizer	0.5% BSA
Concentration	0.5 mg/ml
Storage instruction	For continuous use, store undiluted antibody at 2-8°C for up to a week. For long-term storage, aliquot and store at -20°C or below. Storage in frost free freezers is not recommended. Avoid repeated

freeze/thaw cycles. Suggest spin the vial prior to opening. The antibody solution should be gently mixed before use.

#### Note

For laboratory research only, not for drug, diagnostic or other use.

## Bioinformation

#### Database links

[GeneID: 11342 Human](#)

[Swiss-port # O43567 Human](#)

#### Background

The protein encoded by this gene contains a RING zinc finger, a motif known to be involved in protein-protein interactions. The specific function of this gene has not yet been determined. Alternatively spliced transcript variants that encode the same protein have been reported. A pseudogene, which is also located on chromosome 3, has been defined for this gene. [provided by RefSeq, Jul 2008]

#### Research Area

Cell Biology and Cellular Response antibody

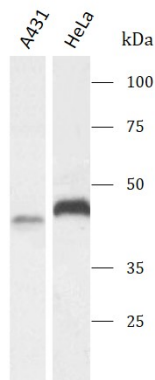
#### Calculated Mw

43 kDa

#### PTM

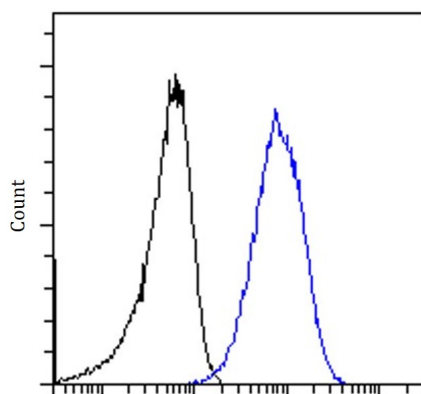
Auto-ubiquitinated.

## Images



ARG63295 anti-RNF13 / RZF antibody WB image

Western blot: A431 and HeLa stained with ARG63295 anti-RNF13 / RZF antibody at 2 µg/ml dilution.



ARG63295 anti-RNF13 / RZF antibody FACS image

Flow Cytometry: A431 stained with ARG63295 anti-RNF13 / RZF antibody at 10 µg/ml dilution.