

ARG63327 anti-SORBS1 / Ponsin antibody

Package: 100 µg
Store at: -20°C

Summary

Product Description	Goat Polyclonal antibody recognizes SORBS1 / Ponsin
Tested Reactivity	Hu
Predict Reactivity	Ms, Rat, Pig
Tested Application	IHC-P
Specificity	This antibody is expected to recognize all seven reported isoforms (NP_006425.2, NP_056200.1, NP_001030126.1, NP_001030127.1, NP_001030128.1, NP_079267.1 and NP_001030129.1).
Host	Goat
Clonality	Polyclonal
Isotype	IgG
Target Name	SORBS1 / Ponsin
Species	Human
Immunogen	C-GTFPGNYVKPLYL
Conjugation	Un-conjugated
Alternate Names	SORB1; Sorbin and SH3 domain-containing protein 1; c-Cbl-associated protein; CAP; Ponsin; SH3 domain protein 5; FLAF2; SH3P12; R85FL; SH3D5

Application Instructions

Application table	Application	Dilution
	IHC-P	2.5 µg/ml
Application Note	IHC-P: Antigen Retrieval: Steam tissue section in Citrate buffer (pH 6.0). * The dilutions indicate recommended starting dilutions and the optimal dilutions or concentrations should be determined by the scientist.	

Properties

Form	Liquid
Purification	Purified from goat serum by antigen affinity chromatography.
Buffer	Tris saline (pH 7.3), 0.02% Sodium azide and 0.5% BSA.
Preservative	0.02% Sodium azide
Stabilizer	0.5% BSA
Concentration	0.5 mg/ml
Storage instruction	For continuous use, store undiluted antibody at 2-8°C for up to a week. For long-term storage, aliquot and store at -20°C or below. Storage in frost free freezers is not recommended. Avoid repeated freeze/thaw cycles. Suggest spin the vial prior to opening. The antibody solution should be gently mixed

before use.

Note

For laboratory research only, not for drug, diagnostic or other use.

Bioinformation

Database links

[GeneID: 10580 Human](#)

[Swiss-port # Q9BX66 Human](#)

Background

This gene encodes a CBL-associated protein which functions in the signaling and stimulation of insulin. Mutations in this gene may be associated with human disorders of insulin resistance. Alternative splicing results in multiple transcript variants. [provided by RefSeq, Mar 2014]

Research Area

Signaling Transduction antibody

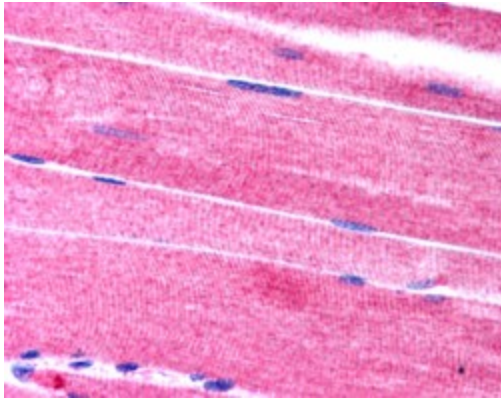
Calculated Mw

143 kDa

PTM

O-glycosylated.

Images



ARG63327 anti-SORBS1 / Ponsin antibody IHC-P image

Immunohistochemistry: paraffin embedded human skeletal muscle. (Steamed antigen retrieval with citrate buffer pH 6) stained with ARG63327 anti-SORBS1 / Ponsin antibody at 2.5 µg/ml dilution followed by AP-staining.