

ARG63328 anti-USP6 / TRE2 / TRE17 antibody

Package: 100 µg
Store at: -20°C

Summary

Product Description	Goat Polyclonal antibody recognizes USP6 / TRE2 / TRE17
Tested Reactivity	Hu
Tested Application	WB
Host	Goat
Clonality	Polyclonal
Isotype	IgG
Target Name	USP6 / TRE2 / TRE17
Species	Human
Immunogen	KISPLHHLQMECSP
Conjugation	Un-conjugated
Alternate Names	USP6-short; Ubiquitin-specific-processing protease 6; TRE17; TRESMCR; Ubiquitin carboxyl-terminal hydrolase 6; Proto-oncogene TRE-2; Deubiquitinating enzyme 6; Ubiquitin thioesterase 6; Tre-2; TRE2; EC 3.4.19.12; HRP1

Application Instructions

Application table	<table> <tr> <th>Application</th><th>Dilution</th></tr> <tr> <td>WB</td><td>1 - 3 µg/ml</td></tr> </table>	Application	Dilution	WB	1 - 3 µg/ml
Application	Dilution				
WB	1 - 3 µg/ml				
Application Note	<p>WB: Recommend incubate at RT for 1h.</p> <p>* The dilutions indicate recommended starting dilutions and the optimal dilutions or concentrations should be determined by the scientist.</p>				

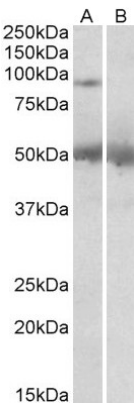
Properties

Form	Liquid
Purification	Purified from goat serum by antigen affinity chromatography.
Buffer	Tris saline (pH 7.3), 0.02% Sodium azide and 0.5% BSA.
Preservative	0.02% Sodium azide
Stabilizer	0.5% BSA
Concentration	0.5 mg/ml
Storage instruction	For continuous use, store undiluted antibody at 2-8°C for up to a week. For long-term storage, aliquot and store at -20°C or below. Storage in frost free freezers is not recommended. Avoid repeated freeze/thaw cycles. Suggest spin the vial prior to opening. The antibody solution should be gently mixed before use.
Note	For laboratory research only, not for drug, diagnostic or other use.

Bioinformation

Database links	GeneID: 9098 Human Swiss-port # P35125 Human
Gene Symbol	USP6
Gene Full Name	ubiquitin specific peptidase 6
Function	Deubiquitinase with an ATP-independent isopeptidase activity, cleaving at the C-terminus of the ubiquitin moiety. Catalyzes its own deubiquitination. In vitro, isoform 2, but not isoform 3, shows deubiquitinating activity. Promotes plasma membrane localization of ARF6 and selectively regulates ARF6-dependent endocytic protein trafficking. Is able to initiate tumorigenesis by inducing the production of matrix metalloproteinases following NF-kappa-B activation. [UniProt]
Research Area	Cell Biology and Cellular Response antibody; Gene Regulation antibody
Calculated Mw	159 kDa
PTM	Monubiquitinated; ubiquitination is calmodulin and calcium dependent.

Images



ARG63328 anti-USP6 / TRE2 / TRE17 antibody WB image

Western Blot: Human Placenta lysate (35 µg protein in RIPA buffer) with (B) and without (A) blocking with the immunizing peptide. stained with ARG63328 anti-USP6 / TRE2 / TRE17 antibody at 2 µg/ml dilution.