

ARG63342 anti-FOXE1 / TTF2 antibody

Package: 100 µg
Store at: -20°C

Summary

Product Description	Goat Polyclonal antibody recognizes FOXE1 / TTF2
Tested Reactivity	Hu
Tested Application	IHC-P
Host	Goat
Clonality	Polyclonal
Isotype	IgG
Target Name	FOXE1 / TTF2
Species	Human
Immunogen	C-AYPGGIDRFVSAM
Conjugation	Un-conjugated
Alternate Names	HFKH4; TITF2; FKHL15; Forkhead box protein E2; HNF-3/fork head-like protein 5; TTF2; HFKL5; FOXE2; Thyroid transcription factor 2; TTF-2; Forkhead box protein E1; Forkhead-related protein FKHL15

Application Instructions

Application table	Application	Dilution
	IHC-P	2 - 5 µg/ml
Application Note	IHC-P: Antigen Retrieval: Steam tissue section in Tris/EDTA buffer (pH 9.0). * The dilutions indicate recommended starting dilutions and the optimal dilutions or concentrations should be determined by the scientist.	

Properties

Form	Liquid
Purification	Purified from goat serum by antigen affinity chromatography.
Buffer	Tris saline (pH 7.3), 0.02% Sodium azide and 0.5% BSA.
Preservative	0.02% Sodium azide
Stabilizer	0.5% BSA
Concentration	0.5 mg/ml
Storage instruction	For continuous use, store undiluted antibody at 2-8°C for up to a week. For long-term storage, aliquot and store at -20°C or below. Storage in frost free freezers is not recommended. Avoid repeated freeze/thaw cycles. Suggest spin the vial prior to opening. The antibody solution should be gently mixed before use.
Note	For laboratory research only, not for drug, diagnostic or other use.

Bioinformation

Database links

[GeneID: 2304 Human](#)

[Swiss-port # O00358 Human](#)

Background

This intronless gene belongs to the forkhead family of transcription factors, which is characterized by a distinct forkhead domain. This gene functions as a thyroid transcription factor which likely plays a crucial role in thyroid morphogenesis. Mutations in this gene are associated with congenital hypothyroidism and cleft palate with thyroid dysgenesis. The map localization of this gene suggests it may also be a candidate gene for squamous cell epithelioma and hereditary sensory neuropathy type I. [provided by RefSeq, Jul 2008]

Research Area

Gene Regulation antibody

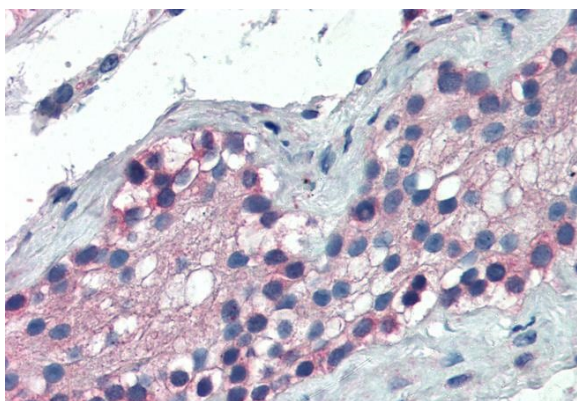
Calculated Mw

38 kDa

PTM

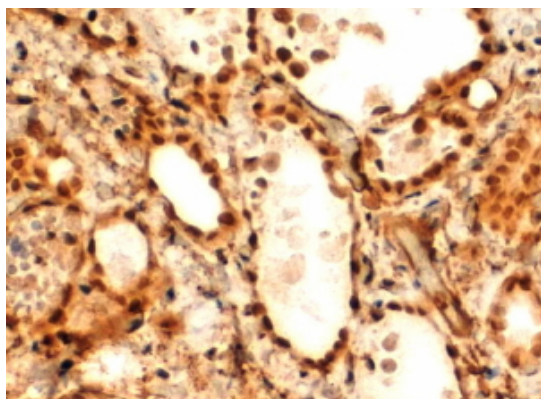
Phosphorylated.

Images



ARG63342 anti-FOX E1 / TTF2 antibody IHC-P image

Immunohistochemistry: Paraffin-embedded Human testis tissue. Antigen Retrieval: Steam tissue section in Tris/EDTA buffer (pH 9.0). The tissue section was stained with ARG63342 anti-FOX E1 / TTF2 antibody at 5 µg/ml dilution followed by AP-staining.



ARG63342 anti-FOX E1 / TTF2 antibody IHC-P image

Immunohistochemistry: paraffin embedded Human Thyroid Gland. (Steamed antigen retrieval with Tris/EDTA buffer pH 9) stained with ARG63342 anti-FOX E1 antibody at 2 µg/ml dilution followed by HRP-staining.