

## ARG63345 anti-REV1L antibody

Package: 100 µg  
Store at: -20°C

### Summary

Product Description	Goat Polyclonal antibody recognizes REV1L
Tested Reactivity	Hu
Predict Reactivity	Ms, Rat, Cow, Dog
Tested Application	IHC-P
Specificity	This antibody is expected to recognise both reported isoforms.
Host	Goat
Clonality	Polyclonal
Isotype	IgG
Target Name	REV1L
Species	Human
Immunogen	C-VLQQTYGSTLKV
Conjugation	Un-conjugated
Alternate Names	EC 2.7.7.-; AIBP80; Rev1-like terminal deoxycytidyl transferase; Alpha integrin-binding protein 80; DNA repair protein REV1; REV1L

### Application Instructions

Application table	Application	Dilution
	IHC-P	4 - 6 µg/ml
Application Note	IHC-P: Antigen Retrieval: Steam tissue section in Tris/EDTA buffer (pH 9.0). * The dilutions indicate recommended starting dilutions and the optimal dilutions or concentrations should be determined by the scientist.	

### Properties

Form	Liquid
Purification	Purified from goat serum by antigen affinity chromatography.
Buffer	Tris saline (pH 7.3), 0.02% Sodium azide and 0.5% BSA.
Preservative	0.02% Sodium azide
Stabilizer	0.5% BSA
Concentration	0.5 mg/ml
Storage instruction	For continuous use, store undiluted antibody at 2-8°C for up to a week. For long-term storage, aliquot and store at -20°C or below. Storage in frost free freezers is not recommended. Avoid repeated freeze/thaw cycles. Suggest spin the vial prior to opening. The antibody solution should be gently mixed before use.

Note For laboratory research only, not for drug, diagnostic or other use.

## Bioinformation

---

Database links [GeneID: 51455 Human](#)

[Swiss-port # Q9UBZ9 Human](#)

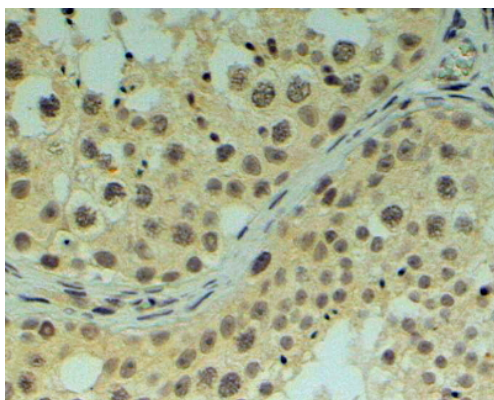
**Background** This gene encodes a protein with similarity to the *S. cerevisiae* mutagenesis protein Rev1. The Rev1 proteins contain a BRCT domain, which is important in protein-protein interactions. A suggested role for the human Rev1-like protein is as a scaffold that recruits DNA polymerases involved in translesion synthesis (TLS) of damaged DNA. Two alternatively spliced transcript variants that encode different proteins have been found. [provided by RefSeq, Jul 2008]

**Research Area** Gene Regulation antibody

**Calculated Mw** 138 kDa

## Images

---



ARG63345 anti-REV1L antibody IHC-P image

Immunohistochemistry: paraffin embedded Human Testis. (Steamed antigen retrieval with Tris/EDTA buffer pH 9) stained with ARG63345 anti-REV1L antibody at 4 µg/ml dilution followed by HRP-staining.