

## ARG63351 anti-RanBP9 / RANBPM antibody

Package: 100 µg  
Store at: -20°C

### Summary

Product Description	Goat Polyclonal antibody recognizes RanBP9 / RANBPM
Tested Reactivity	Hu
Predict Reactivity	Ms, Dog, Pig
Tested Application	ICC/IF, IHC-P
Specificity	This product is also expected to recognize the centrosome-associated truncated isoform RANBPM (BAA23216.1).
Host	Goat
Clonality	Polyclonal
Isotype	IgG
Target Name	RanBP9 / RANBPM
Immunogen	GSCAFATVEDYLH
Conjugation	Un-conjugated
Alternate Names	RANBPM; RanBPM; BPM-L; Ran-binding protein 9; RanBP9; BPM90; RanBP7; Ran-binding protein M

### Application Instructions

Application table	Application	Dilution
	ICC/IF	Assay - dependent
	IHC-P	3 - 10 µg/ml
Application Note	IHC-P: Antigen Retrieval: Steam tissue section in Citrate buffer (pH 6.0). * The dilutions indicate recommended starting dilutions and the optimal dilutions or concentrations should be determined by the scientist.	

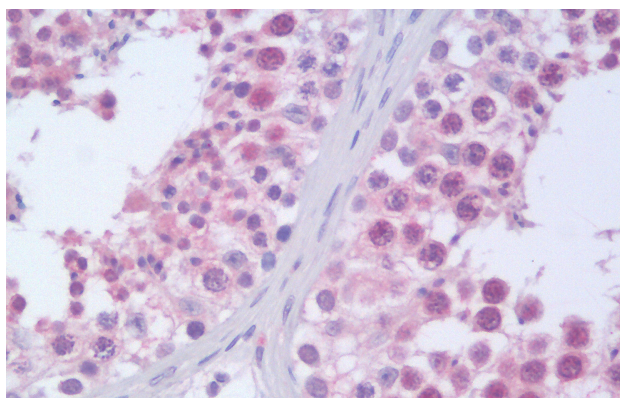
### Properties

Form	Liquid
Purification	Purified from goat serum by antigen affinity chromatography.
Buffer	Tris saline (pH 7.3), 0.02% Sodium azide and 0.5% BSA.
Preservative	0.02% Sodium azide
Stabilizer	0.5% BSA
Concentration	0.5 mg/ml
Storage instruction	For continuous use, store undiluted antibody at 2-8°C for up to a week. For long-term storage, aliquot and store at -20°C or below. Storage in frost free freezers is not recommended. Avoid repeated freeze/thaw cycles. Suggest spin the vial prior to opening. The antibody solution should be gently mixed before use.

## Bioinformation

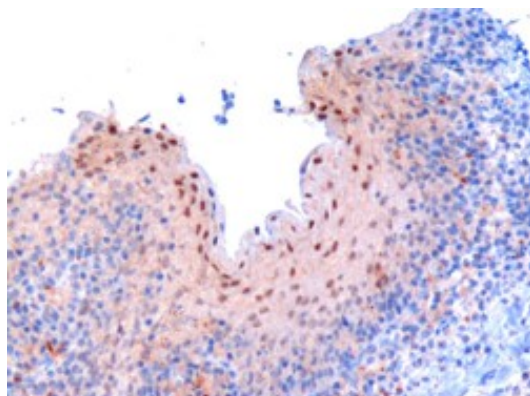
Database links	<a href="#">GeneID: 10048 Human</a> <a href="#">Swiss-port # Q96S59 Human</a>
Background	This gene encodes a protein that binds RAN, a small GTP binding protein belonging to the RAS superfamily that is essential for the translocation of RNA and proteins through the nuclear pore complex. The protein encoded by this gene has also been shown to interact with several other proteins, including met proto-oncogene, homeodomain interacting protein kinase 2, androgen receptor, and cyclin-dependent kinase 11. [provided by RefSeq, Jul 2008]
Research Area	Cell Biology and Cellular Response antibody; Gene Regulation antibody
Calculated Mw	78 kDa
PTM	Phosphorylated in response to stress. Can be phosphorylated by the cleaved p110 form of CDC2L1 (p110C). Ubiquitinated. Polyubiquitination targets the protein for rapid degradation via the ubiquitin system. Can be deubiquitinated by USP11.

## Images



ARG63351 anti-RanBP9 / RANBPM antibody IHC-P image

Immunohistochemistry: Paraffin-embedded Human testis tissue. Antigen Retrieval: Steam tissue section in Citrate buffer (pH 6.0). The tissue section was stained with ARG63351 anti-RanBP9 / RANBPM antibody at 10 µg/ml dilution followed by AP-staining.



ARG63351 anti-RanBP9 / RANBPM antibody IHC-P image

Immunohistochemistry: Paraffin embedded Human tonsil. (Microwaved antigen retrieval with Tris/EDTA buffer pH9) stained with ARG63351 anti-RanBP9 / RANBPM antibody at 3 µg/ml dilution followed by HRP-staining.