

ARG63368 anti-SAE1 / AOS1 antibody

Package: 100 µg
Store at: -20°C

Summary

Product Description	Goat Polyclonal antibody recognizes SAE1 / AOS1
Tested Reactivity	Hu
Predict Reactivity	Cow, Dog
Tested Application	FACS, WB
Host	Goat
Clonality	Polyclonal
Isotype	IgG
Target Name	SAE1 / AOS1
Species	Human
Immunogen	MKNGIVECLGPK
Conjugation	Un-conjugated
Alternate Names	UBLE1A; SUMO-activating enzyme subunit 1; AOS1; HSPC140; SUA1; Ubiquitin-like 1-activating enzyme E1A

Application Instructions

Application table	Application	Dilution
	FACS	10 µg/ml
	WB	1 µg/ml
Application Note	WB: Recommend incubate at RT for 1h. * The dilutions indicate recommended starting dilutions and the optimal dilutions or concentrations should be determined by the scientist.	

Properties

Form	Liquid
Purification	Purified from goat serum by antigen affinity chromatography.
Buffer	Tris saline (pH 7.3), 0.02% Sodium azide and 0.5% BSA.
Preservative	0.02% Sodium azide
Stabilizer	0.5% BSA
Concentration	0.5 mg/ml
Storage instruction	For continuous use, store undiluted antibody at 2-8°C for up to a week. For long-term storage, aliquot and store at -20°C or below. Storage in frost free freezers is not recommended. Avoid repeated freeze/thaw cycles. Suggest spin the vial prior to opening. The antibody solution should be gently mixed before use.

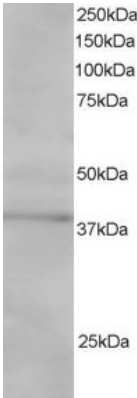
Note

For laboratory research only, not for drug, diagnostic or other use.

Bioinformation

Database links	GeneID: 10055 Human Swiss-port # Q9UBE0 Human
Background	Posttranslational modification of proteins by the addition of the small protein SUMO (see SUMO1; MIM 601912), or sumoylation, regulates protein structure and intracellular localization. SAE1 and UBA2 (MIM 613295) form a heterodimer that functions as a SUMO-activating enzyme for the sumoylation of proteins (Okuma et al., 1999 [PubMed 9920803]).[supplied by OMIM, Mar 2010]
Research Area	Cell Biology and Cellular Response antibody
Calculated Mw	38 kDa

Images



ARG63368 anti-SAE1 / AOS1 antibody WB image

Western Blot: Jurkat lysate (RIPA buffer, 30µg total protein per lane) stained with ARG63368 anti-SAE1 / AOS1 antibody at 1 µg/ml dilution.