

ARG63382 anti-POLL / POLkappa antibody

Package: 100 µg
Store at: -20°C

Summary

Product Description	Goat Polyclonal antibody recognizes POLL / POLkappa
Tested Reactivity	Hu
Tested Application	WB
Specificity	It has been brought to our attention that this product may crossreact with Pol beta (NP_002681), an evolutionarily related polymerase with a predicted size of 39 kDa. The overall % of identity is not very high (about 32% in the core) but considering only the peptide that we used as immunogen the two share the sequence YREP**R** at the C-terminus. Further the protein structures appear to be very similar in this region.
Host	Goat
Clonality	Polyclonal
Isotype	IgG
Target Name	POLL / POLkappa
Species	Human
Immunogen	C-LGLPYREPAERDW
Conjugation	Un-conjugated
Alternate Names	DNA polymerase beta-2; BETAN; EC 4.2.99.-; EC 2.7.7.7; Pol beta2; Pol Lambda; POLKAPPA; DNA polymerase kappa; DNA polymerase lambda

Application Instructions

Application table	Application	Dilution
	WB	0.5 - 1 µg/ml
Application Note	WB: Recommend incubate at RT for 1h. * The dilutions indicate recommended starting dilutions and the optimal dilutions or concentrations should be determined by the scientist.	

Properties

Form	Liquid
Purification	Purified from goat serum by antigen affinity chromatography.
Buffer	Tris saline (pH 7.3), 0.02% Sodium azide and 0.5% BSA.
Preservative	0.02% Sodium azide
Stabilizer	0.5% BSA
Concentration	0.5 mg/ml
Storage instruction	For continuous use, store undiluted antibody at 2-8°C for up to a week. For long-term storage, aliquot and store at -20°C or below. Storage in frost free freezers is not recommended. Avoid repeated

freeze/thaw cycles. Suggest spin the vial prior to opening. The antibody solution should be gently mixed before use.

Note

For laboratory research only, not for drug, diagnostic or other use.

Bioinformation

Database links

[GeneID: 27343 Human](#)

[Swiss-port # Q9UGP5 Human](#)

Background

This gene encodes a DNA polymerase. DNA polymerases catalyze DNA-template-directed extension of the 3'-end of a DNA strand. This particular polymerase, which is a member of the X family of DNA polymerases, likely plays a role in non-homologous end joining and other DNA repair processes. Alternatively spliced transcript variants have been described. [provided by RefSeq, Mar 2010]

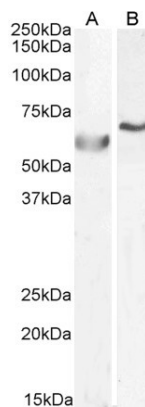
Research Area

Gene Regulation antibody

Calculated Mw

63 kDa

Images



ARG63382 anti-POLL / POLkappa antibody WB image

Western blot: 35 µg of A549 (A) and HepG2 (B) cell lysates (in RIPA buffer) stained with ARG63382 anti-POLL / POLkappa antibody at 0.5 µg/ml (A) and 1 µg/ml (B) dilutions and incubated at RT for 1 hour.