

ARG63385 anti-GIPC1 / NIP antibody

Package: 100 µg
Store at: -20°C

Summary

Product Description	Goat Polyclonal antibody recognizes GIPC1 / NIP
Tested Reactivity	Hu
Predict Reactivity	Ms, Rat, Cow
Tested Application	WB
Specificity	This antibody is expected to recognize both isoform 1 (NP_005707.1, NP_974197.1 and NP_974199.1) and isoform 2 (NP_974196.1, NP_974198.1 and NP_974223.1).
Host	Goat
Clonality	Polyclonal
Isotype	IgG
Target Name	GIPC1 / NIP
Species	Human
Immunogen	C-GAIGDAKVGRY
Conjugation	Un-conjugated
Alternate Names	GLUT1CBP; RGS-GAIP-interacting protein; RGS19IP1; C19orf3; IIP-1; Tax interaction protein 2; GIPC; Hs.6454; SYNECTIN; GAIP C-terminus-interacting protein; Synectin; RGS19-interacting protein 1; TIP-2; NIP; PDZ domain-containing protein GIPC1; SEMCAP; SYNECTIN

Application Instructions

Application table	Application	Dilution
	WB	0.03 - 0.1 µg/ml
Application Note	WB: Recommend incubate at RT for 1h. * The dilutions indicate recommended starting dilutions and the optimal dilutions or concentrations should be determined by the scientist.	

Properties

Form	Liquid
Purification	Purified from goat serum by antigen affinity chromatography.
Buffer	Tris saline (pH 7.3), 0.02% Sodium azide and 0.5% BSA.
Preservative	0.02% Sodium azide
Stabilizer	0.5% BSA
Concentration	0.5 mg/ml
Storage instruction	For continuous use, store undiluted antibody at 2-8°C for up to a week. For long-term storage, aliquot and store at -20°C or below. Storage in frost free freezers is not recommended. Avoid repeated

freeze/thaw cycles. Suggest spin the vial prior to opening. The antibody solution should be gently mixed before use.

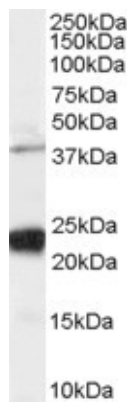
Note

For laboratory research only, not for drug, diagnostic or other use.

Bioinformation

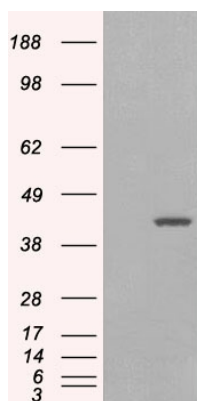
Database links	GeneID: 10755 Human Swiss-port # O14908 Human
Gene Symbol	GIPC1 / NIP
Gene Full Name	GIPC PDZ domain containing family member 1
Background	GIPC1 is a scaffolding protein that regulates cell surface receptor expression and trafficking (Lee et al., 2008 [PubMed 18775991]).[supplied by OMIM, Apr 2009]
Research Area	Signaling Transduction antibody
Calculated Mw	36 kDa

Images



ARG63385 anti-GIPC1 / NIP antibody WB image

Western Blot: human HeLa cell lysate (RIPA buffer, 35 µg total protein per lane) stained with ARG63385 anti-GIPC1 / NIP antibody at 0.03 µg/ml dilution.



ARG63385 anti-GIPC1 / NIP antibody WB image

Western Blot: 1). Mock transfection; 2) GIPC1 isoform 1 (RC216466) expressing plasmid transfected HEK293 cell lysate stained with ARG63385 anti-GIPC1 / NIP antibody