

ARG63389 anti-NET1 / ARHGEF8 antibody

Package: 100 µg
Store at: -20°C

Summary

Product Description	Goat Polyclonal antibody recognizes NET1 / ARHGEF8
Tested Reactivity	Hu
Predict Reactivity	Ms
Tested Application	IHC-P
Specificity	This antibody is expected to recognize both reported isoforms (NP_001040625.1 and NP_005854.2).
Host	Goat
Clonality	Polyclonal
Isotype	IgG
Target Name	NET1 / ARHGEF8
Species	Human
Immunogen	C-DKALSGGKRKETLV
Conjugation	Un-conjugated
Alternate Names	Rho guanine nucleotide exchange factor 8; NET1A; Proto-oncogene p65 Net1; Neuroepithelial cell-transforming gene 1 protein; ARHGEF8

Application Instructions

Application table	Application	Dilution
	IHC-P	1 - 2 µg/ml
Application Note	IHC-P: Antigen Retrieval: Microwaved tissue section in Citrate buffer (pH 6.0). * The dilutions indicate recommended starting dilutions and the optimal dilutions or concentrations should be determined by the scientist.	

Properties

Form	Liquid
Purification	Purified from goat serum by antigen affinity chromatography.
Buffer	Tris saline (pH 7.3), 0.02% Sodium azide and 0.5% BSA.
Preservative	0.02% Sodium azide
Stabilizer	0.5% BSA
Concentration	0.5 mg/ml
Storage instruction	For continuous use, store undiluted antibody at 2-8°C for up to a week. For long-term storage, aliquot and store at -20°C or below. Storage in frost free freezers is not recommended. Avoid repeated freeze/thaw cycles. Suggest spin the vial prior to opening. The antibody solution should be gently mixed before use.

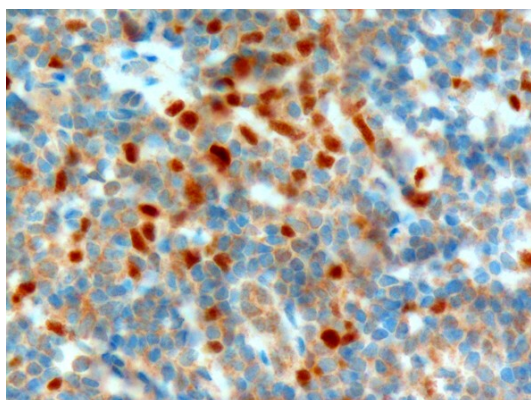
Note

For laboratory research only, not for drug, diagnostic or other use.

Bioinformation

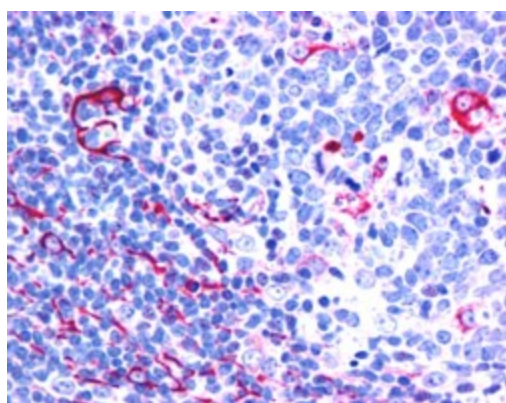
Database links	GeneID: 10276 Human Swiss-port # Q7Z628 Human
Background	This gene is part of the family of Rho guanine nucleotide exchange factors. Members of this family activate Rho proteins by catalyzing the exchange of GDP for GTP. The protein encoded by this gene interacts with RhoA within the cell nucleus and may play a role in repairing DNA damage after ionizing radiation. Pseudogenes of this gene are located on the long arms of chromosomes 1, 7 and 18. Alternative splicing results in multiple transcript variants that encode different protein isoforms. [provided by RefSeq, Jul 2012]
Research Area	Cancer antibody; Gene Regulation antibody; Signaling Transduction antibody
Calculated Mw	68 kDa

Images



ARG63389 anti-NET1 / ARHGEF8 antibody IHC-P image

Immunohistochemistry: Paraffin-embedded Human tonsil tissue. Antigen Retrieval: Microwaved tissue section in Citrate buffer (pH 6.0). The tissue section was stained with ARG63389 anti-NET1 / ARHGEF8 antibody at 1 µg/ml dilution followed by HRP-staining.



ARG63389 anti-NET1 / ARHGEF8 antibody IHC-P image

Immunohistochemistry: paraffin embedded Human Tonsil. (Steamed antigen retrieval with citrate buffer pH 6) stained with ARG63389 anti-NET1 / ARHGEF8 antibody at 2.5 µg/ml dilution followed by AP-staining.