

## ARG63412 anti-PHLDA2 / IPL antibody

Package: 100 µg  
Store at: -20°C

### Summary

Product Description	Goat Polyclonal antibody recognizes PHLDA2 / IPL
Tested Reactivity	Hu
Tested Application	IHC-P
Host	Goat
Clonality	Polyclonal
Isotype	IgG
Target Name	PHLDA2 / IPL
Species	Human
Immunogen	C-EPSRSPSPQPKRTP
Conjugation	Un-conjugated
Alternate Names	Imprinted in placenta and liver protein; Beckwith-Wiedemann syndrome chromosomal region 1 candidate gene C protein; Tumor-suppressing STF cDNA 3 protein; p17-BWR1C; HLDA2; IPL; BWR1C; BRW1C; Tumor-suppressing subchromosomal transferable fragment candidate gene 3 protein; p17-Beckwith-Wiedemann region 1 C; Pleckstrin homology-like domain family A member 2; TSSC3

### Application Instructions

Application table	<table> <tr> <th>Application</th><th>Dilution</th></tr> <tr> <td>IHC-P</td><td>3 - 5 µg/ml</td></tr> </table>	Application	Dilution	IHC-P	3 - 5 µg/ml
Application	Dilution				
IHC-P	3 - 5 µg/ml				
Application Note	<p>IHC-P: Antigen Retrieval: Steam tissue section in Citrate buffer (pH 6.0).</p> <p>* The dilutions indicate recommended starting dilutions and the optimal dilutions or concentrations should be determined by the scientist.</p>				

### Properties

Form	Liquid
Purification	Purified from goat serum by antigen affinity chromatography.
Buffer	Tris saline (pH 7.3), 0.02% Sodium azide and 0.5% BSA.
Preservative	0.02% Sodium azide
Stabilizer	0.5% BSA
Concentration	0.5 mg/ml
Storage instruction	For continuous use, store undiluted antibody at 2-8°C for up to a week. For long-term storage, aliquot and store at -20°C or below. Storage in frost free freezers is not recommended. Avoid repeated freeze/thaw cycles. Suggest spin the vial prior to opening. The antibody solution should be gently mixed before use.
Note	For laboratory research only, not for drug, diagnostic or other use.

## Bioinformation

### Database links

[GeneID: 7262 Human](#)

[Swiss-port # Q53GA4 Human](#)

### Background

This gene is located in a cluster of imprinted genes on chromosome 11p15.5, which is considered to be an important tumor suppressor gene region. Alterations in this region may be associated with the Beckwith-Wiedemann syndrome, Wilms tumor, rhabdomyosarcoma, adrenocortical carcinoma, and lung, ovarian, and breast cancer. This gene has been shown to be imprinted, with preferential expression from the maternal allele in placenta and liver. [provided by RefSeq, Oct 2010]

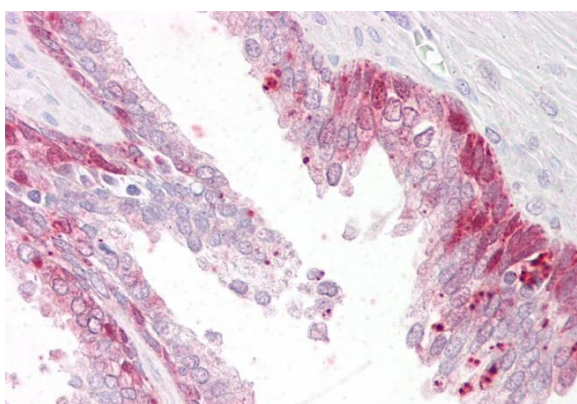
### Research Area

Cell Biology and Cellular Response antibody; Gene Regulation antibody

### Calculated Mw

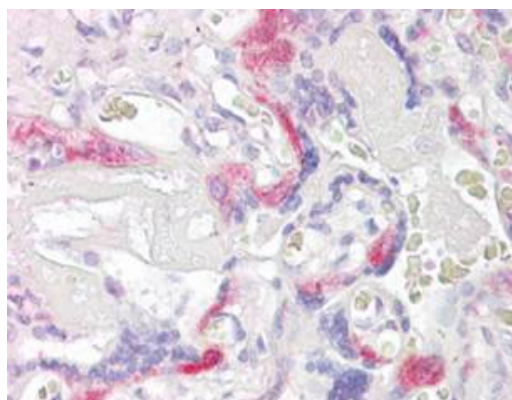
17 kDa

## Images



ARG63412 anti-PHLDA2 / IPL antibody IHC-P image

Immunohistochemistry: Paraffin-embedded Human prostate tissue. Antigen Retrieval: Steam tissue section in Citrate buffer (pH 6.0). The tissue section was stained with ARG63412 anti-PHLDA2 / IPL antibody at 3.75 µg/ml dilution followed by AP-staining.



ARG63412 anti-PHLDA2 / IPL antibody IHC-P image

Immunohistochemistry: paraffin embedded Human Placenta. (Steamed antigen retrieval with citrate buffer pH 6) stained with ARG63412 anti-PHLDA2 / IPL antibody at 3.8 µg/ml dilution followed by AP-staining.