

ARG63443 anti-IRF6 antibody

Package: 100 µg
Store at: -20°C

Summary

Product Description	Goat Polyclonal antibody recognizes IRF6
Tested Reactivity	Hu
Tested Application	IHC-P, WB
Host	Goat
Clonality	Polyclonal
Isotype	IgG
Target Name	IRF6
Species	Human
Immunogen	C-TPSMQLPPALPPQ
Conjugation	Un-conjugated
Alternate Names	Interferon regulatory factor 6; PPS1; LPS; VWS; PPS; VWS1; OFC6; PIT; IRF-6

Application Instructions

Application table	Application	Dilution
	IHC-P	2 - 5 µg/ml
	WB	0.2 - 0.6 µg/ml
Application Note	WB: Recommend incubate at RT for 1h. IHC-P: Antigen Retrieval: Steam tissue section in Citrate buffer (pH 6.0). * The dilutions indicate recommended starting dilutions and the optimal dilutions or concentrations should be determined by the scientist.	

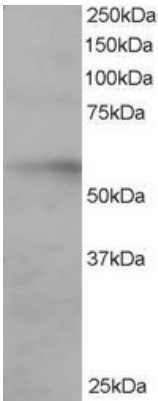
Properties

Form	Liquid
Purification	Purified from goat serum by antigen affinity chromatography.
Buffer	Tris saline (pH 7.3), 0.02% Sodium azide and 0.5% BSA.
Preservative	0.02% Sodium azide
Stabilizer	0.5% BSA
Concentration	0.5 mg/ml
Storage instruction	For continuous use, store undiluted antibody at 2-8°C for up to a week. For long-term storage, aliquot and store at -20°C or below. Storage in frost free freezers is not recommended. Avoid repeated freeze/thaw cycles. Suggest spin the vial prior to opening. The antibody solution should be gently mixed before use.
Note	For laboratory research only, not for drug, diagnostic or other use.

Bioinformation

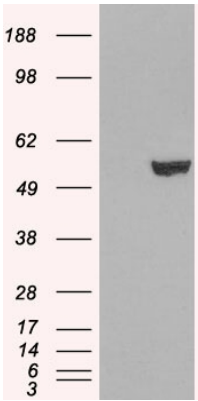
Database links	GeneID: 3664 Human Swiss-port # O14896 Human
Background	This gene encodes a member of the interferon regulatory transcription factor (IRF) family. Family members share a highly-conserved N-terminal helix-turn-helix DNA-binding domain and a less conserved C-terminal protein-binding domain. The encoded protein may be a transcriptional activator. Mutations in this gene can cause van der Woude syndrome and popliteal pterygium syndrome. Mutations in this gene are also associated with non-syndromic orofacial cleft type 6. Alternate splicing results in multiple transcript variants.[provided by RefSeq, May 2011]
Research Area	Developmental Biology antibody; Gene Regulation antibody; Immune System antibody
Calculated Mw	53 kDa
PTM	Phosphorylated. Phosphorylation status depends on the cell cycle and is a signal for ubiquitination and proteasome-mediated degradation.

Images



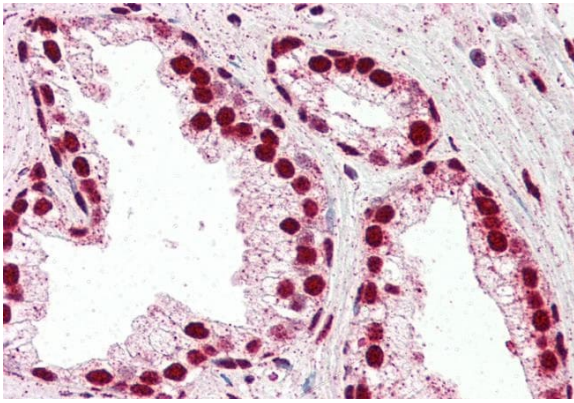
ARG63443 anti-IRF6 antibody WB image

Western Blot: Human Ovary lysate (RIPA buffer, 35 µg total protein per lane) stained with ARG63443 anti-IRF6 antibody at 0.2 µg/ml dilution.



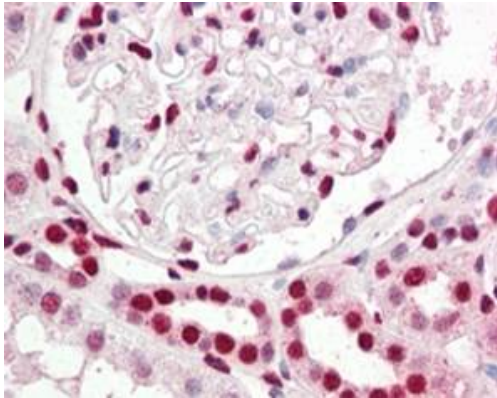
ARG63443 anti-IRF6 antibody WB image

Western Blot: 1). Mock transfection; 2) IRF6 (RC201579) expressing plasmid transfected HEK293 cell lysate stained with ARG63443 anti-IRF6 antibody



ARG63443 anti-IRF6 antibody IHC-P image

Immunohistochemistry: Paraffin-embedded Human prostate tissue. Antigen Retrieval: Steam tissue section in Citrate buffer (pH 6.0). The tissue section was stained with ARG63443 anti-IRF6 antibody at 5 µg/ml dilution followed by AP-staining.



ARG63443 anti-IRF6 antibody IHC-P image

Immunohistochemistry: paraffin embedded Human Kidney. (Steamed antigen retrieval with citrate buffer pH 6) stained with ARG63443 anti-IRF6 antibody at 2.5 µg/ml dilution followed by AP-staining.