

ARG63445 anti-CSK antibody

Package: 100 µg, 50 µg
Store at: -20°C

Summary

Product Description	Goat Polyclonal antibody recognizes CSK
Tested Reactivity	Hu
Predict Reactivity	Ms, Rat, Cow, Dog
Tested Application	WB
Specificity	Reported variants represent identical protein: NP_004374.1; NP_001120662.1.
Host	Goat
Clonality	Polyclonal
Isotype	IgG
Target Name	CSK
Species	Human
Immunogen	C-EQLEHIKTHELHL
Conjugation	Un-conjugated
Alternate Names	Protein-tyrosine kinase CYL; C-Src kinase; Tyrosine-protein kinase CSK; EC 2.7.10.2

Application Instructions

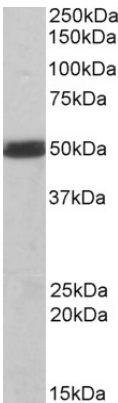
Application table	Application	Dilution
	WB	0.1 - 0.3 µg/ml
Application Note	WB: Recommend incubate at RT for 1h. * The dilutions indicate recommended starting dilutions and the optimal dilutions or concentrations should be determined by the scientist.	

Properties

Form	Liquid
Purification	Purified from goat serum by antigen affinity chromatography.
Buffer	Tris saline (pH 7.3), 0.02% Sodium azide and 0.5% BSA.
Preservative	0.02% Sodium azide
Stabilizer	0.5% BSA
Concentration	0.5 mg/ml
Storage instruction	For continuous use, store undiluted antibody at 2-8°C for up to a week. For long-term storage, aliquot and store at -20°C or below. Storage in frost free freezers is not recommended. Avoid repeated freeze/thaw cycles. Suggest spin the vial prior to opening. The antibody solution should be gently mixed before use.

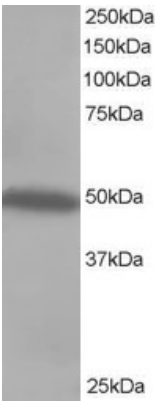
Note	For laboratory research only, not for drug, diagnostic or other use.
Bioinformation	
Database links	GeneID: 1445 Human Swiss-port # P41240 Human
Gene Symbol	CSK
Gene Full Name	c-src tyrosine kinase
Function	Non-receptor tyrosine-protein kinase that plays an important role in the regulation of cell growth, differentiation, migration and immune response. Phosphorylates tyrosine residues located in the C-terminal tails of Src-family kinases (SFKs) including LCK, SRC, HCK, FYN, LYN or YES1. Upon tail phosphorylation, Src-family members engage in intramolecular interactions between the phosphotyrosine tail and the SH2 domain that result in an inactive conformation. To inhibit SFKs, CSK is recruited to the plasma membrane via binding to transmembrane proteins or adapter proteins located near the plasma membrane. Suppresses signaling by various surface receptors, including T-cell receptor (TCR) and B-cell receptor (BCR) by phosphorylating and maintaining inactive several positive effectors such as FYN or LCK. [UniProt]
Research Area	Signaling Transduction antibody; Src Family Protein Tyrosine Kinases antibody
Calculated Mw	51 kDa
PTM	Phosphorylated at Ser-364 by PKA, leading to increased activity. Autophosphorylated.

Images



ARG63445 anti-CSK antibody WB image

Western Blot: Mouse Spleen lysate (35 µg protein in RIPA buffer) stained with ARG63445 anti-CSK antibody at 1 µg/ml dilution.



ARG63445 anti-CSK antibody WB image

Western Blot: Jurkat lysate (35µg protein in RIPA buffer) stained with ARG63445 anti-CSK antibody (0.5µg/ml)