

## ARG63447 anti-SHP2 antibody

Package: 100 µg  
Store at: -20°C

### Summary

Product Description	Goat Polyclonal antibody recognizes SHP2
Tested Reactivity	Hu
Predict Reactivity	Ms, Rat, Cow, Pig
Tested Application	FACS, ICC/IF, IHC-P, WB
Host	Goat
Clonality	Polyclonal
Isotype	IgG
Target Name	SHP2
Species	Human
Immunogen	C-YENVGLMQQKSFR
Conjugation	Un-conjugated
Alternate Names	BTP3; SHP-2; Protein-tyrosine phosphatase 2C; METCDS; PTP2C; Tyrosine-protein phosphatase non-receptor type 11; PTP-1D; CFC; PTP-2C; JMML; Shp2; Protein-tyrosine phosphatase 1D; NS1; EC 3.1.3.48; SH-PTP2; SH-PTP3; SHP2

### Application Instructions

Application table	Application	Dilution
	FACS	10 µg/ml
	ICC/IF	10 µg/ml
	IHC-P	Assay - dependent
	WB	1 - 3 µg/ml
Application Note	WB: Recommend incubate at RT for 1h. IHC-P: Antigen Retrieval: Steam tissue section in Citrate buffer (pH 6.0). * The dilutions indicate recommended starting dilutions and the optimal dilutions or concentrations should be determined by the scientist.	

### Properties

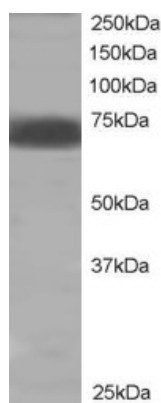
Form	Liquid
Purification	Purified from goat serum by antigen affinity chromatography.
Buffer	Tris saline (pH 7.3), 0.02% Sodium azide and 0.5% BSA.
Preservative	0.02% Sodium azide
Stabilizer	0.5% BSA

Concentration	0.5 mg/ml
Storage instruction	For continuous use, store undiluted antibody at 2-8°C for up to a week. For long-term storage, aliquot and store at -20°C or below. Storage in frost free freezers is not recommended. Avoid repeated freeze/thaw cycles. Suggest spin the vial prior to opening. The antibody solution should be gently mixed before use.
Note	For laboratory research only, not for drug, diagnostic or other use.

## Bioinformation

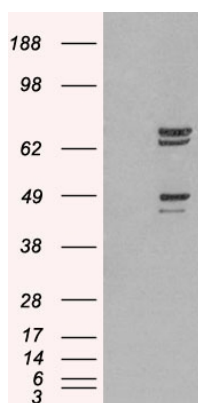
Database links	<a href="#">GeneID: 5781 Human</a> <a href="#">Swiss-port # Q06124 Human</a>
Background	<p>The protein encoded by this gene is a member of the protein tyrosine phosphatase (PTP) family. PTPs are known to be signaling molecules that regulate a variety of cellular processes including cell growth, differentiation, mitotic cycle, and oncogenic transformation. This PTP contains two tandem Src homology-2 domains, which function as phospho-tyrosine binding domains and mediate the interaction of this PTP with its substrates. This PTP is widely expressed in most tissues and plays a regulatory role in various cell signaling events that are important for a diversity of cell functions, such as mitogenic activation, metabolic control, transcription regulation, and cell migration. Mutations in this gene are a cause of Noonan syndrome as well as acute myeloid leukemia. Two transcript variants encoding different isoforms have been found for this gene. [provided by RefSeq, May 2012]</p>
Research Area	Neuroscience antibody; Signaling Transduction antibody
Calculated Mw	68 kDa
PTM	Phosphorylated on Tyr-546 and Tyr-584 upon receptor protein tyrosine kinase activation; which creates a binding site for GRB2 and other SH2-containing proteins. Phosphorylated upon activation of the receptor-type kinase FLT3. Phosphorylated upon activation of the receptor-type kinase PDGFRA (By similarity). Phosphorylated by activated PDGFRB.

## Images



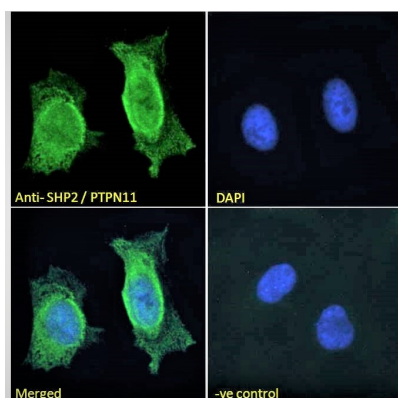
ARG63447 anti-SHP2 antibody WB image

Western blot: Human muscle lysate (RIPA buffer, 35 µg total protein per lane) stained with ARG63447 anti-SHP2 antibody at 2 µg/ml dilution.



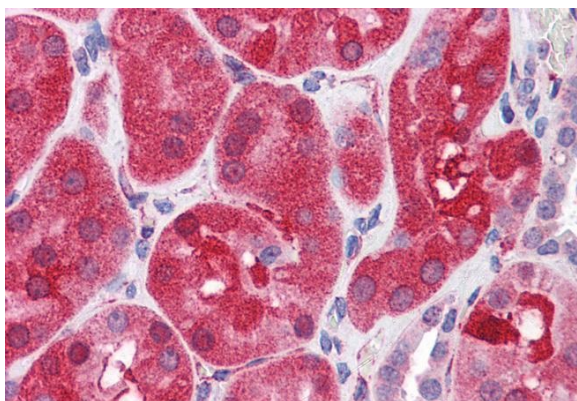
ARG63447 anti-SHP2 antibody WB image

Western blot: 1). Mock transfection; 2) PTPN11 (RC220029) expressing plasmid transfected HEK293 cell lysate stained with ARG63447 anti-SHP2 antibody.



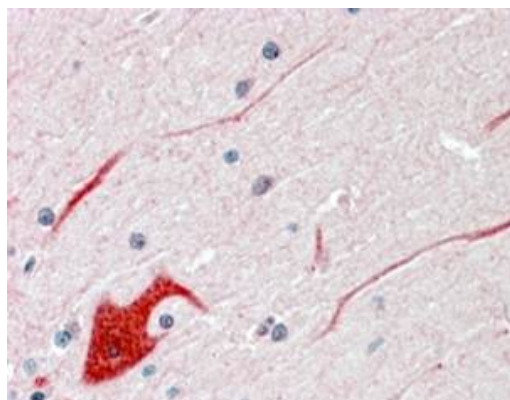
ARG63447 anti-SHP2 antibody ICC/IF image

Immunofluorescence: Paraformaldehyde fixed HeLa cells permeabilized with 0.15% Triton. Cells were stained with ARG63447 anti-SHP2 antibody (green) at 10 µg/ml dilution for 1 hour. DAPI (blue) for nuclear staining. Negative control: Unimmunized goat IgG (green) at 10 µg/ml dilution.



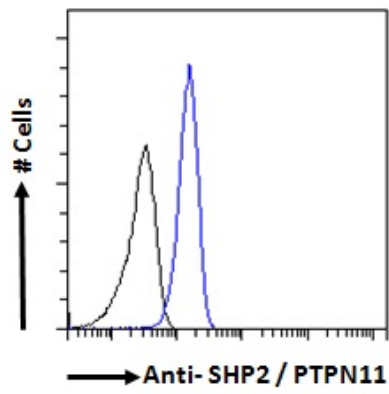
ARG63447 anti-SHP2 antibody IHC-P image

Immunohistochemistry: Paraffin-embedded Human kidney tissue. Antigen Retrieval: Steamed tissue section in Citrate buffer (pH 6.0). The tissue section was stained with ARG63447 anti-SHP2 antibody at 3.75 µg/ml dilution followed by AP-staining.



ARG63447 anti-SHP2 antibody IHC-P image

Immunohistochemistry: Paraffin embedded Human Cerebellum (Steamed antigen retrieval with citrate buffer pH 6) stained with ARG63447 anti-SHP2 antibody at 3.8 µg/ml dilution followed by AP-staining.



#### ARG63447 anti-SHP2 antibody FACS image

Flow Cytometry: Paraformaldehyde-fixed A431 cells permeabilized with 0.5% Triton. Cells were stained with ARG63447 anti-SHP2 antibody (blue line) at 10 µg/ml dilution for 1 hour, followed by incubation with Alexa FluorR 488 labelled secondary antibody. IgG control: Unimmunized goat IgG (black line).