

ARG63479 anti-CHFR antibody

Package: 100 µg
Store at: -20°C

Summary

Product Description	Goat Polyclonal antibody recognizes CHFR
Tested Reactivity	Hu
Predict Reactivity	Ms, Rat, Cow, Pig
Tested Application	IHC-P
Specificity	This antibody is expected to recognise all reported isoforms.
Host	Goat
Clonality	Polyclonal
Isotype	IgG
Target Name	CHFR
Species	Human
Immunogen	KFNHICEQTRFKN
Conjugation	Un-conjugated
Alternate Names	EC 6.3.2.-; RNF196; E3 ubiquitin-protein ligase CHFR; RNF116; Checkpoint with forkhead and RING finger domains protein; RING finger protein 196

Application Instructions

Application table	Application	Dilution
	IHC-P	2.5 µg/ml
Application Note	IHC-P: Antigen Retrieval: Steam tissue section in Citrate buffer (pH 6.0). * The dilutions indicate recommended starting dilutions and the optimal dilutions or concentrations should be determined by the scientist.	

Properties

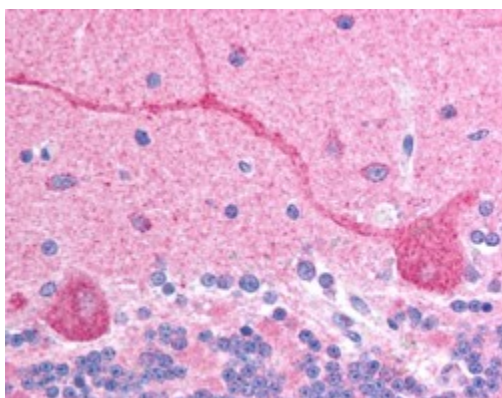
Form	Liquid
Purification	Purified from goat serum by antigen affinity chromatography.
Buffer	Tris saline (pH 7.3), 0.02% Sodium azide and 0.5% BSA.
Preservative	0.02% Sodium azide
Stabilizer	0.5% BSA
Concentration	0.5 mg/ml
Storage instruction	For continuous use, store undiluted antibody at 2-8°C for up to a week. For long-term storage, aliquot and store at -20°C or below. Storage in frost free freezers is not recommended. Avoid repeated freeze/thaw cycles. Suggest spin the vial prior to opening. The antibody solution should be gently mixed before use.

Note For laboratory research only, not for drug, diagnostic or other use.

Bioinformation

Database links	GeneID: 55743 Human Swiss-port # Q96EP1 Human
Background	This gene encodes an E3 ubiquitin-protein ligase required for the maintenance of the antephasic checkpoint that regulates cell cycle entry into mitosis and, therefore, may play a key role in cell cycle progression and tumorigenesis. The encoded protein has an N-terminal forkhead-associated domain, a central RING-finger domain, and a cysteine-rich C-terminal region. Alternatively spliced transcript variants that encode different protein isoforms have been described. [provided by RefSeq, Mar 2014]
Research Area	Cancer antibody; Cell Biology and Cellular Response antibody; Gene Regulation antibody
Calculated Mw	73 kDa
PTM	Poly-ADP-ribosylated. In addition to binding non covalently poly(ADP-ribose) via its PBZ-type zinc finger, the protein is also covalently poly-ADP-ribosylated by PARP1. Autoubiquitinated; may regulate its cellular level. Phosphorylated by PKB. Phosphorylation may affect its E3 ligase activity.

Images



ARG63479 anti-CHFR antibody IHC-P image

Immunohistochemistry: paraffin embedded human brain (cerebellum). (Steamed antigen retrieval with citrate buffer pH 6) stained with ARG63479 anti-CHFR antibody at 2.5 µg/ml dilution followed by AP-staining.