

## ARG63487 anti-ELF5 antibody

Package: 100 µg  
Store at: -20°C

### Summary

Product Description	Goat Polyclonal antibody recognizes ELF5
Tested Reactivity	Hu
Predict Reactivity	Ms, Rat, Cow
Tested Application	IHC-P
Specificity	This antibody is expected to recognise both reported Human isoforms represented by NP_938195.1 and NP_001413.1.
Host	Goat
Clonality	Polyclonal
Isotype	IgG
Target Name	ELF5
Species	Human
Immunogen	C-GKNAHGWQEDKL
Conjugation	Un-conjugated
Alternate Names	ESE2; Epithelium-specific Ets transcription factor 2; ESE-2; ETS-related transcription factor Elf-5; Epithelium-restricted ESE-1-related Ets factor; E74-like factor 5

### Application Instructions

Application table	Application	Dilution
	IHC-P	4 µg/ml
Application Note	IHC-P: Antigen Retrieval: Steam tissue section in Citrate buffer (pH 6.0). * The dilutions indicate recommended starting dilutions and the optimal dilutions or concentrations should be determined by the scientist.	

### Properties

Form	Liquid
Purification	Purified from goat serum by antigen affinity chromatography.
Buffer	Tris saline (pH 7.3), 0.02% Sodium azide and 0.5% BSA.
Preservative	0.02% Sodium azide
Stabilizer	0.5% BSA
Concentration	0.5 mg/ml
Storage instruction	For continuous use, store undiluted antibody at 2-8°C for up to a week. For long-term storage, aliquot and store at -20°C or below. Storage in frost free freezers is not recommended. Avoid repeated freeze/thaw cycles. Suggest spin the vial prior to opening. The antibody solution should be gently mixed

before use.

Note

For laboratory research only, not for drug, diagnostic or other use.

## Bioinformation

---

Database links

[GeneID: 2001 Human](#)

[Swiss-port # Q9UKW6 Human](#)

Background

The protein encoded by this gene is a member of an epithelium-specific subclass of the Ets transcription factor family. In addition to its role in regulating the later stages of terminal differentiation of keratinocytes, it appears to regulate a number of epithelium-specific genes found in tissues containing glandular epithelium such as salivary gland and prostate. It has very low affinity to DNA due to its negative regulatory domain at the amino terminus. Several alternatively spliced transcript variants encoding different isoforms have been described for this gene. [provided by RefSeq, Jul 2011]

Research Area

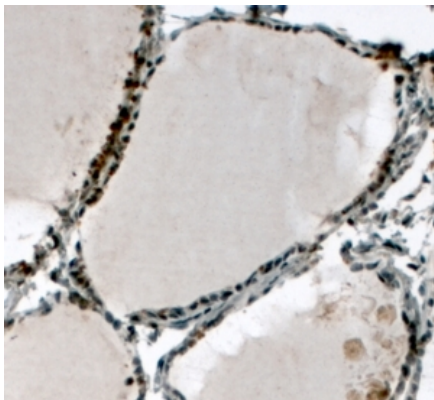
Gene Regulation antibody

Calculated Mw

31 kDa

## Images

---



ARG63487 anti-ELF5 antibody IHC-P image

Immunohistochemistry: Paraffin-embedded Human thyroid gland tissue. Antigen Retrieval: Steam tissue section in Citrate buffer (pH 6.0). The tissue section was stained with ARG63487 anti-ELF5 antibody at 4 µg/ml dilution, followed by HRP-staining.