

## ARG63504 anti-MID2 / TRIM1 antibody

Package: 100 µg  
Store at: -20°C

### Summary

Product Description	Goat Polyclonal antibody recognizes MID2 / TRIM1
Tested Reactivity	Hu, Ms, Rat
Predict Reactivity	Cow, Dog, Pig
Tested Application	IHC-P, WB
Specificity	This antibody is expected to recognise both human isoforms of this protein.
Host	Goat
Clonality	Polyclonal
Isotype	IgG
Target Name	MID2 / TRIM1
Immunogen	QESPYVSGMKTCH
Conjugation	Un-conjugated
Alternate Names	RNF60; FXY2; RING finger protein 60; Probable E3 ubiquitin-protein ligase MID2; EC 6.3.2.-; Midline defect 2; MRX101; Midline-2; TRIM1; Tripartite motif-containing protein 1; Midin-2

### Application Instructions

Application table	Application	Dilution
	IHC-P	5 - 10 µg/ml
	WB	0.1 - 0.3 µg/ml
Application Note	IHC-P: Antigen Retrieval: Steam tissue section in Citrate buffer (pH 6.0). WB: Recommend incubate at RT for 1h. * The dilutions indicate recommended starting dilutions and the optimal dilutions or concentrations should be determined by the scientist.	

### Properties

Form	Liquid
Purification	Purified from goat serum by antigen affinity chromatography.
Buffer	Tris saline (pH 7.3), 0.02% Sodium azide and 0.5% BSA.
Preservative	0.02% Sodium azide
Stabilizer	0.5% BSA
Concentration	0.5 mg/ml
Storage instruction	For continuous use, store undiluted antibody at 2-8°C for up to a week. For long-term storage, aliquot and store at -20°C or below. Storage in frost free freezers is not recommended. Avoid repeated freeze/thaw cycles. Suggest spin the vial prior to opening. The antibody solution should be gently mixed

before use.

#### Note

For laboratory research only, not for drug, diagnostic or other use.

## Bioinformation

#### Database links

[GeneID: 11043 Human](#)

[GeneID: 23947 Mouse](#)

[Swiss-port # Q9QUS6 Mouse](#)

[Swiss-port # Q9UJV3 Human](#)

#### Background

The protein encoded by this gene is a member of the tripartite motif (TRIM) family. The TRIM motif includes three zinc-binding domains, a RING, a B-box type 1 and a B-box type 2, and a coiled-coil region. The protein localizes to microtubular structures in the cytoplasm. Alternate splicing of this gene results in two transcript variants encoding different isoforms. [provided by RefSeq, Feb 2009]

#### Research Area

Gene Regulation antibody; Neuroscience antibody; Signaling Transduction antibody

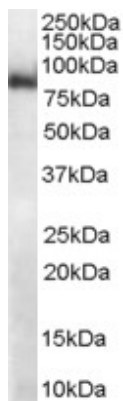
#### Calculated Mw

83 kDa

#### PTM

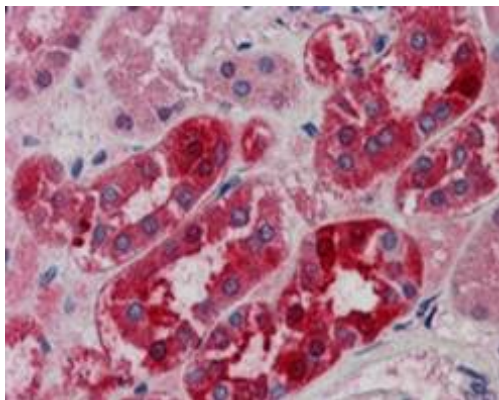
Phosphorylated on serine and threonine residues.

## Images



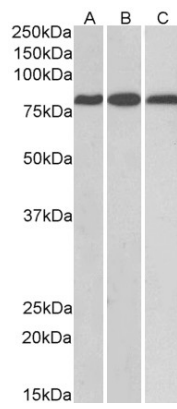
ARG63504 anti-MID2 / TRIM1 antibody WB image

Western Blot: mouse heart lysate (RIPA buffer, 35 µg total protein per lane) stained with ARG63504 anti-MID2 / TRIM1 antibody at 1 µg/ml dilution.



ARG63504 anti-MID2 / TRIM1 antibody IHC-P image

Immunohistochemistry: paraffin embedded Human Kidney. (Steamed antigen retrieval with citrate buffer pH 6) stained with ARG63504 anti-MID2 / TRIM1 antibody at 5 µg/ml dilution followed by AP-staining.



#### ARG63504 anti-MID2 / TRIM1 antibody WB image

Western blot: 35 µg of Mouse heart (A), Rat heart (B) and Rat kidney (C) lysates (in RIPA buffer) stained with ARG63504 anti-MID2 / TRIM1 antibody at 0.1 µg/ml dilution and incubated at RT for 1 hour.