

ARG63506 anti-GULP1 / CED6 antibody

Package: 100 µg
Store at: -20°C

Summary

Product Description	Goat Polyclonal antibody recognizes GULP1 / CED6
Tested Reactivity	Hu
Predict Reactivity	Ms, Rat, Dog
Tested Application	IHC-P, WB
Host	Goat
Clonality	Polyclonal
Isotype	IgG
Target Name	GULP1 / CED6
Species	Human
Immunogen	EGTVFCLDPLDSRC
Conjugation	Un-conjugated
Alternate Names	Protein GULP; GULP; PTB domain-containing engulfment adapter protein 1; CED6; CED-6; PTB domain adapter protein CED-6; Cell death protein 6 homolog

Application Instructions

Application table	Application	Dilution
	IHC-P	5 - 10 µg/ml
	WB	0.2 - 0.6 µg/ml
Application Note	<p>IHC-P: Antigen Retrieval: Steam tissue section in Citrate buffer (pH 6.0). WB: Recommend incubate at RT for 1h. * The dilutions indicate recommended starting dilutions and the optimal dilutions or concentrations should be determined by the scientist.</p>	

Properties

Form	Liquid
Purification	Purified from goat serum by antigen affinity chromatography.
Buffer	Tris saline (pH 7.3), 0.02% Sodium azide and 0.5% BSA.
Preservative	0.02% Sodium azide
Stabilizer	0.5% BSA
Concentration	0.5 mg/ml
Storage instruction	For continuous use, store undiluted antibody at 2-8°C for up to a week. For long-term storage, aliquot and store at -20°C or below. Storage in frost free freezers is not recommended. Avoid repeated freeze/thaw cycles. Suggest spin the vial prior to opening. The antibody solution should be gently mixed

before use.

Note

For laboratory research only, not for drug, diagnostic or other use.

Bioinformation

Database links

[GeneID: 51454 Human](#)

[Swiss-port # Q9UBP9 Human](#)

Background

The protein encoded by this gene is an adapter protein necessary for the engulfment of apoptotic cells by phagocytes. Several transcript variants, some protein coding and some thought not to be protein coding, have been found for this gene. [provided by RefSeq, Nov 2011]

Research Area

Signaling Transduction antibody

Calculated Mw

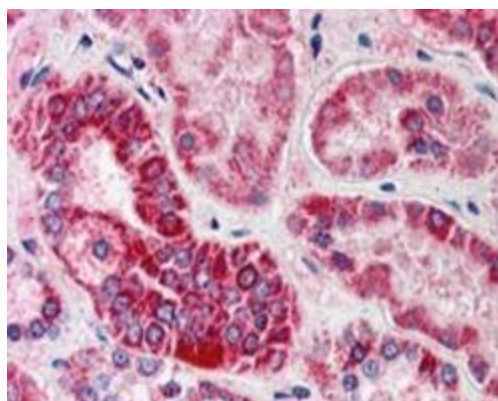
34 kDa

Images



ARG63506 anti-GULP1 / CED6 antibody WB image

Western Blot: Human Placenta lysate (RIPA buffer, 30µg total protein per lane) stained with ARG63506 anti-GULP1 / CED6 antibody at 0.2 µg/ml dilution.



ARG63506 anti-GULP1 / CED6 antibody IHC-P image

Immunohistochemistry: paraffin embedded Human Kidney. (Steamed antigen retrieval with citrate buffer pH 6) stained with ARG63506 anti-GULP1 / CED6 antibody at 5 µg/ml dilution followed by AP-staining.