

ARG63533 anti-KIF5B / Kinesin Heavy Chain antibody

Package: 100 µg
Store at: -20°C

Summary

Product Description	Goat Polyclonal antibody recognizes KIF5B / Kinesin Heavy Chain
Tested Reactivity	Hu
Predict Reactivity	Ms, Rat, Cow, Dog
Tested Application	WB
Host	Goat
Clonality	Polyclonal
Isotype	IgG
Target Name	KIF5B / Kinesin Heavy Chain
Species	Human
Immunogen	C-QPVAVRGGGGKQV
Conjugation	Un-conjugated
Alternate Names	HEL-S-61; Kinesin-1 heavy chain; Conventional kinesin heavy chain; KINH; KNS1; Ubiquitous kinesin heavy chain; UKHC; KNS

Application Instructions

Application table	Application	Dilution
	WB	0.5 - 1.5 µg/ml
Application Note	WB: Recommend incubate at RT for 1h. * The dilutions indicate recommended starting dilutions and the optimal dilutions or concentrations should be determined by the scientist.	

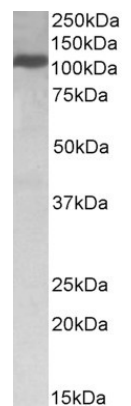
Properties

Form	Liquid
Purification	Purified from goat serum by antigen affinity chromatography.
Buffer	Tris saline (pH 7.3), 0.02% Sodium azide and 0.5% BSA.
Preservative	0.02% Sodium azide
Stabilizer	0.5% BSA
Concentration	0.5 mg/ml
Storage instruction	For continuous use, store undiluted antibody at 2-8°C for up to a week. For long-term storage, aliquot and store at -20°C or below. Storage in frost free freezers is not recommended. Avoid repeated freeze/thaw cycles. Suggest spin the vial prior to opening. The antibody solution should be gently mixed before use.
Note	For laboratory research only, not for drug, diagnostic or other use.

Bioinformation

Database links	GeneID: 3799 Human Swiss-port # P33176 Human
Gene Symbol	KIF5B
Gene Full Name	kinesin family member 5B
Function	Microtubule-dependent motor required for normal distribution of mitochondria and lysosomes. [UniProt]
Research Area	Neuroscience antibody; Signaling Transduction antibody
Calculated Mw	110 kDa

Images



ARG63533 anti-KIF5B / Kinesin Heavy Chain antibody WB image

Western blot: 35 µg of Jurkat cell lysate (in RIPA buffer) stained with ARG63533 anti-KIF5B / Kinesin Heavy Chain antibody at 0.5 µg/ml dilution and incubated at RT for 1 hour.



ARG63533 anti-KIF5B / Kinesin Heavy Chain antibody WB image

Western blot: 35 µg of HeLa cell lysate (in RIPA buffer) stained with ARG63533 anti-KIF5B / Kinesin Heavy Chain antibody at 0.03 µg/ml dilution and incubated at RT for 1 hour.