

## ARG63578 anti-PDLIM1 / CLP36 antibody

Package: 100 µg  
Store at: -20°C

### Summary

Product Description	Goat Polyclonal antibody recognizes PDLIM1 / CLP36
Tested Reactivity	Hu
Tested Application	IHC-P, WB
Host	Goat
Clonality	Polyclonal
Isotype	IgG
Target Name	PDLIM1 / CLP36
Species	Human
Immunogen	C-TPPEGYEVVTVFPK
Conjugation	Un-conjugated
Alternate Names	Elfin; CLIM1; C-terminal LIM domain protein 1; hCLIM1; PDZ and LIM domain protein 1; CLP36; CLP-36; LIM domain protein CLP-36; HEL-S-112

### Application Instructions

Application table	Application	Dilution
	IHC-P	5 µg/ml
	WB	0.1 - 0.3 µg/ml
Application Note	WB: Recommend incubate at RT for 1h. IHC-P: Antigen Retrieval: Steam tissue section in Citrate buffer (pH 6.0). * The dilutions indicate recommended starting dilutions and the optimal dilutions or concentrations should be determined by the scientist.	

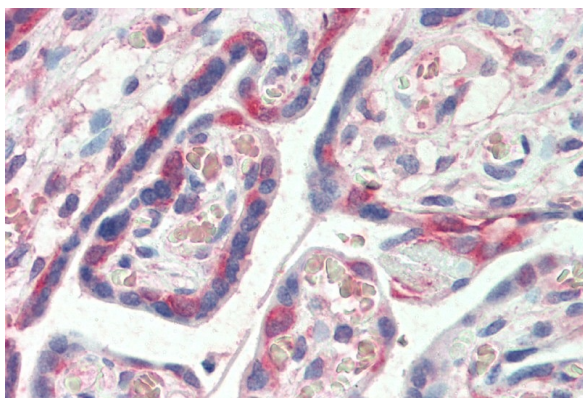
### Properties

Form	Liquid
Purification	Purified from goat serum by antigen affinity chromatography.
Buffer	Tris saline (pH 7.3), 0.02% Sodium azide and 0.5% BSA.
Preservative	0.02% Sodium azide
Stabilizer	0.5% BSA
Concentration	0.5 mg/ml
Storage instruction	For continuous use, store undiluted antibody at 2-8°C for up to a week. For long-term storage, aliquot and store at -20°C or below. Storage in frost free freezers is not recommended. Avoid repeated freeze/thaw cycles. Suggest spin the vial prior to opening. The antibody solution should be gently mixed before use.

## Bioinformation

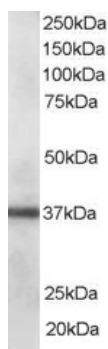
Database links	<a href="#">GeneID: 9124 Human</a> <a href="#">Swiss-port # O00151 Human</a>
Gene Symbol	PDLIM1
Gene Full Name	PDZ and LIM domain 1
Background	This gene encodes a member of the enigma protein family. The protein contains two protein interacting domains, a PDZ domain at the amino terminal end and one to three LIM domains at the carboxyl terminal. It is a cytoplasmic protein associated with the cytoskeleton. The protein may function as an adapter to bring other LIM-interacting proteins to the cytoskeleton. Pseudogenes associated with this gene are located on chromosomes 3, 14 and 17. [provided by RefSeq, Oct 2012]
Function	Cytoskeletal protein that may act as an adapter that brings other proteins (like kinases) to the cytoskeleton (PubMed:10861853). Involved in assembly, disassembly and directioning of stress fibers in fibroblasts. Required for the localization of ACTN1 and PALLD to stress fibers. Required for cell migration and in maintaining cell polarity of fibroblasts (By similarity). [UniProt]
Research Area	Cancer antibody; Gene Regulation antibody; Metabolism antibody
Calculated Mw	36 kDa

## Images



ARG63578 anti-PDLIM1 / CLP36 antibody IHC-P image

Immunohistochemistry: Paraffin-embedded Human placenta tissue. Antigen Retrieval: Steam tissue section in Citrate buffer (pH 6.0). The tissue section was stained with ARG63578 anti-PDLIM1 / CLP36 antibody at 5 µg/ml dilution followed by AP-staining.



ARG63578 anti-PDLIM1 / CLP36 antibody WB image

Western blot: 35 µg of Human lung lysate (in RIPA buffer) stained with ARG63578 anti-PDLIM1 / CLP36 antibody at 0.1 µg/ml dilution and incubated at RT for 1 hour.