

ARG63584 anti-STUB1 / CHIP antibody

Package: 100 µg
Store at: -20°C

Summary

Product Description	Goat Polyclonal antibody recognizes STUB1 / CHIP
Tested Reactivity	Hu
Predict Reactivity	Ms, Rat, Cow, Dog
Tested Application	IHC-P, WB
Host	Goat
Clonality	Polyclonal
Isotype	IgG
Target Name	STUB1 / CHIP
Species	Human
Immunogen	C-DAFISENGWVEDY
Conjugation	Un-conjugated
Alternate Names	NY-CO-7; Antigen NY-CO-7; UBOX1; EC 6.3.2.-; E3 ubiquitin-protein ligase CHIP; SDCCAG7; CHIP; STIP1 homology and U box-containing protein 1; HSPABP2; SCAR16; Carboxy terminus of Hsp70-interacting protein; CLL-associated antigen KW-8

Application Instructions

Application table	Application	Dilution
	IHC-P	Assay - dependent
	WB	0.3 - 1 µg/ml
Application Note	WB: Recommend incubate at RT for 1h. IHC-P: Antigen Retrieval: Steam tissue section in Citrate buffer (pH 6.0). * The dilutions indicate recommended starting dilutions and the optimal dilutions or concentrations should be determined by the scientist.	

Properties

Form	Liquid
Purification	Purified from goat serum by antigen affinity chromatography.
Buffer	Tris saline (pH 7.3), 0.02% Sodium azide and 0.5% BSA.
Preservative	0.02% Sodium azide
Stabilizer	0.5% BSA
Concentration	0.5 mg/ml
Storage instruction	For continuous use, store undiluted antibody at 2-8°C for up to a week. For long-term storage, aliquot and store at -20°C or below. Storage in frost free freezers is not recommended. Avoid repeated

freeze/thaw cycles. Suggest spin the vial prior to opening. The antibody solution should be gently mixed before use.

Note

For laboratory research only, not for drug, diagnostic or other use.

Bioinformation

Database links

[GeneID: 10273 Human](#)

[Swiss-port # Q9UNE7 Human](#)

Background

STUB1, or CHIP, is a ubiquitin ligase/cochaperone that participates in protein quality control by targeting a broad range of chaperone protein substrates for degradation (Min et al., 2008 [PubMed 18411298]).[supplied by OMIM, Jul 2009]

Research Area

Gene Regulation antibody; Signaling Transduction antibody

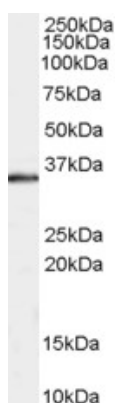
Calculated Mw

35 kDa

PTM

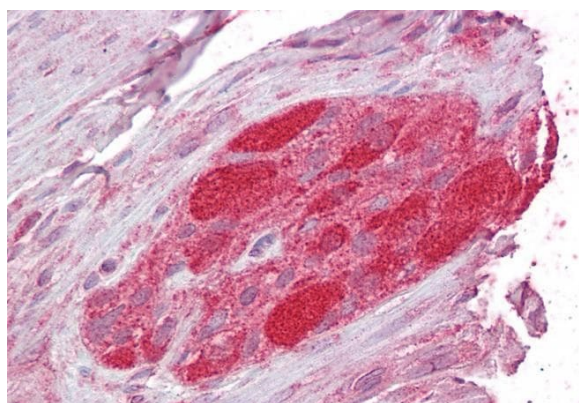
Monoubiquitinated at Lys-2 following cell stress by UBE2W, promoting the interaction with ATXN3 (By similarity). Auto-ubiquitinated; mediated by UBE2D1 and UBE2D2.

Images



ARG63584 anti-STUB1 / CHIP antibody WB image

Western Blot: Human Muscle lysate (RIPA buffer, 35 µg total protein per lane) stained with ARG63584 anti-STUB1 / CHIP antibody at 0.3 µg/ml dilution.



ARG63584 anti-STUB1 / CHIP antibody IHC-P image

Immunohistochemistry: Paraffin-embedded Human small intestine tissue. Antigen Retrieval: Steam tissue section in Citrate buffer (pH 6.0). The tissue section was stained with ARG63584 anti-STUB1 / CHIP antibody at 2.5 µg/ml dilution followed by AP-staining.