

## ARG63596 anti-Bcl 2 antibody

Package: 100 µg  
Store at: -20°C

### Summary

Product Description	Goat Polyclonal antibody recognizes Bcl 2
Tested Reactivity	Hu
Predict Reactivity	Ms, Rat, Dog
Tested Application	WB
Specificity	This antibody is expected to recognise both reported isoforms (NP_000624; NP_000648)
Host	Goat
Clonality	Polyclonal
Isotype	IgG
Target Name	Bcl 2
Species	Human
Immunogen	AGRTGYDNREIVMKYC
Conjugation	Un-conjugated
Alternate Names	BCL2; BCL2 Apoptosis Regulator; PPP1R50; Bcl-2; Protein Phosphatase 1, Regulatory Subunit 50; Apoptosis Regulator Bcl-2; B-Cell CLL/Lymphoma 2; BCL2, Apoptosis Regulator

### Application Instructions

Application table	Application	Dilution
	WB	0.1 - 0.3 µg/ml
Application Note	WB: Recommend incubate at RT for 1h. * The dilutions indicate recommended starting dilutions and the optimal dilutions or concentrations should be determined by the scientist.	

### Properties

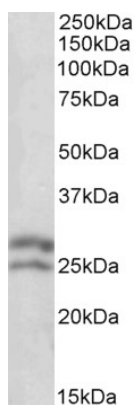
Form	Liquid
Purification	Purified from goat serum by antigen affinity chromatography.
Buffer	Tris saline (pH 7.3), 0.02% Sodium azide and 0.5% BSA.
Preservative	0.02% Sodium azide
Stabilizer	0.5% BSA
Concentration	0.5 mg/ml
Storage instruction	For continuous use, store undiluted antibody at 2-8°C for up to a week. For long-term storage, aliquot and store at -20°C or below. Storage in frost free freezers is not recommended. Avoid repeated freeze/thaw cycles. Suggest spin the vial prior to opening. The antibody solution should be gently mixed before use.

Note For laboratory research only, not for drug, diagnostic or other use.

## Bioinformation

Database links	<a href="#">GeneID: 596 Human</a> <a href="#">Swiss-port # P10415 Human</a>
Gene Symbol	BCL2
Gene Full Name	B-cell CLL/lymphoma 2
Background	This gene encodes an integral outer mitochondrial membrane protein that blocks the apoptotic death of some cells such as lymphocytes. Constitutive expression of BCL2, such as in the case of translocation of BCL2 to Ig heavy chain locus, is thought to be the cause of follicular lymphoma. Alternative splicing results in multiple transcript variants. [provided by RefSeq, Feb 2016]
Function	Suppresses apoptosis in a variety of cell systems including factor-dependent lymphohematopoietic and neural cells. [UniProt]
Highlight	Related Antibody Duos and Panels: <a href="#">ARG30268 Apoptosis Marker Antibody Duo (Bcl2, Bax)</a> <a href="#">ARG30269 Apoptosis Marker Antibody Duo (Bcl2, Bid)</a> Related products: <a href="#">Bcl-2 antibodies: Bcl-2 Duos / Panels: Anti-Rabbit IgG secondary antibodies:</a> Related news: <a href="#">Lymphoma</a>
Research Area	Cancer antibody; Cell Biology and Cellular Response antibody; Cell Death antibody; Metabolism antibody; Signaling Transduction antibody; Apoptosis Marker antibody
Calculated Mw	26 kDa
PTM	Phosphoprotein, Ubl conjugation. [UniProt]
Cellular Localization	Cytoplasm, Endoplasmic reticulum, Membrane, Mitochondrion, Mitochondrion outer membrane, Nucleus. [UniProt]

## Images



ARG63596 anti-Bcl 2 antibody WB image

Western blot: Human Lymph lysate (35 µg protein in RIPA buffer) stained with ARG63596 anti-Bcl 2 antibody at 0.1 µg/ml dilution.