

ARG63621 anti-alpha smooth muscle Actin antibody

Package: 100 µg, 50 µg
Store at: -20°C

Summary

Product Description	Goat Polyclonal antibody recognizes alpha smooth muscle Actin
Tested Reactivity	Hu, Ms, Rat, Pig
Predict Reactivity	Dog
Tested Application	ICC/IF, IHC-P, WB
Specificity	Variants NP_001604.1 and NP_001135417.1 encode the same protein.
Host	Goat
Clonality	Polyclonal
Isotype	IgG
Target Name	alpha smooth muscle Actin
Antigen Species	Human
Immunogen	EEEDSTALVC
Conjugation	Un-conjugated
Alternate Names	Cell growth-inhibiting gene 46 protein; MYMY5; ACTSA; Alpha-actin-2; Actin, aortic smooth muscle; AAT6

Application Instructions

Application Note	WB: Recommend incubate at RT for 1h. Approx 46 kDa band observed in Human Duodenum lysates (calculated MW of 42.0 kDa according to NP_001604.1). Recommended concentration: 0.5-1.5 µg/ml. IHC-P: In paraffin embedded Human and Murine Lung shows staining of the alveolar walls. Recommended concentration, 2-4 µg/ml. * The dilutions indicate recommended starting dilutions and the optimal dilutions or concentrations should be determined by the scientist.
Calculated Mw	42 kDa

Properties

Form	Liquid
Purification	Purified from goat serum by ammonium sulphate precipitation followed by antigen affinity chromatography using the immunizing peptide.
Buffer	Tris saline (pH 7.3), 0.02% Sodium azide and 0.5% BSA
Preservative	0.02% Sodium azide
Stabilizer	0.5% BSA
Concentration	0.5 mg/ml
Storage instruction	For continuous use, store undiluted antibody at 2-8°C for up to a week. For long-term storage, aliquot and store at -20°C or below. Storage in frost free freezers is not recommended. Avoid repeated freeze/thaw cycles. Suggest spin the vial prior to opening. The antibody solution should be gently mixed

before use.

Note

For laboratory research only, not for drug, diagnostic or other use.

Bioinformation

Background

The protein encoded by this gene belongs to the actin family of proteins, which are highly conserved proteins that play a role in cell motility, structure and integrity. Alpha, beta and gamma actin isoforms have been identified, with alpha actins being a major constituent of the contractile apparatus, while beta and gamma actins are involved in the regulation of cell motility. This actin is an alpha actin that is found in skeletal muscle. Defects in this gene cause aortic aneurysm familial thoracic type 6. Multiple alternatively spliced variants, encoding the same protein, have been identified. [provided by RefSeq, Nov 2008]

Highlight

Related products:

[alpha smooth muscle Actin antibodies](#); [alpha smooth muscle Actin Duos / Panels](#); [Anti-Goat IgG secondary antibodies](#);

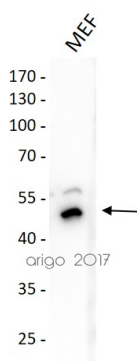
Related news:

[Besides tumor suppression, what's p53 busy for during embryogenesis?](#)

Resrarch Area

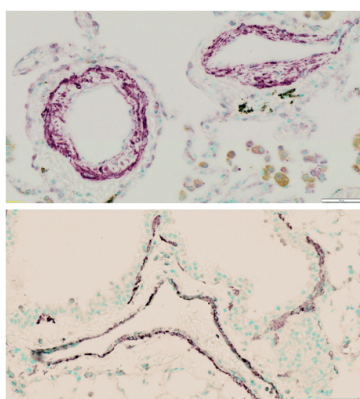
Cell Biology and Cellular Response antibody; Controls and Markers antibody; Signaling Transduction antibody

Images



ARG63621 anti-alpha smooth muscle Actin antibody WB image

Western blot: 30 µg of MEF cell lysate stained with ARG63621 anti-alpha smooth muscle Actin antibody at 1:300 dilution.



ARG63621 anti-Smooth muscle alpha-actin antibody IHC-P image

Immunohistochemistry: paraffin embedded Human Lung (top) and Mouse Lung (bottom). (Trypsin-mediated antigen retrieval) stained with ARG63621 anti-Smooth muscle alpha-actin antibody at 2.5 µg/ml dilution followed by HRP-staining.