

ARG63628 anti-STMN2 / SCG10 antibody

Package: 100 µg
Store at: -20°C

Summary

Product Description	Goat Polyclonal antibody recognizes STMN2 / SCG10
Tested Reactivity	Ms
Predict Reactivity	Hu, Rat, Cow, Dog
Tested Application	IHC-P, WB
Host	Goat
Clonality	Polyclonal
Isotype	IgG
Target Name	STMN2 / SCG10
Species	Human
Immunogen	AKTAMAYKEK-C
Conjugation	Un-conjugated
Alternate Names	Protein SCG10; SCG10; SCGN10; Stathmin-2; Superior cervical ganglion-10 protein

Application Instructions

Application table	Application	Dilution
	IHC-P	Assay - dependent
	WB	0.3 - 1 µg/ml
Application Note	WB: Recommend incubate at RT for 1h. IHC-P: Antigen Retrieval: Steam tissue section in Citrate buffer (pH 6.0). * The dilutions indicate recommended starting dilutions and the optimal dilutions or concentrations should be determined by the scientist.	

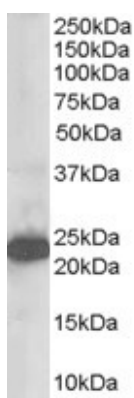
Properties

Form	Liquid
Purification	Purified from goat serum by antigen affinity chromatography.
Buffer	Tris saline (pH 7.3), 0.02% Sodium azide and 0.5% BSA.
Preservative	0.02% Sodium azide
Stabilizer	0.5% BSA
Concentration	0.5 mg/ml
Storage instruction	For continuous use, store undiluted antibody at 2-8°C for up to a week. For long-term storage, aliquot and store at -20°C or below. Storage in frost free freezers is not recommended. Avoid repeated freeze/thaw cycles. Suggest spin the vial prior to opening. The antibody solution should be gently mixed before use.

Bioinformation

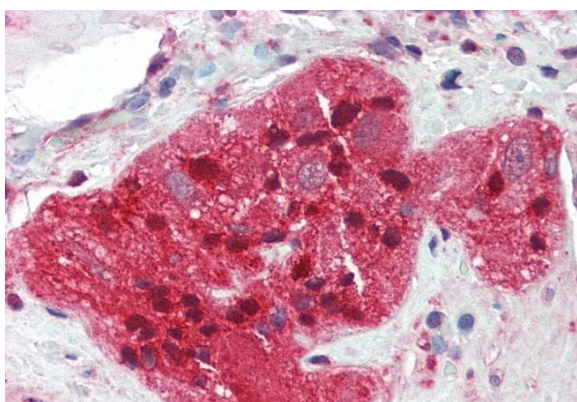
Database links	GeneID: 20257 Mouse Swiss-port # P55821 Mouse
Background	This gene encodes a member of the stathmin family of phosphoproteins. Stathmin proteins function in microtubule dynamics and signal transduction. The encoded protein plays a regulatory role in neuronal growth and is also thought to be involved in osteogenesis. Reductions in the expression of this gene have been associated with Down's syndrome and Alzheimer's disease. Alternatively spliced transcript variants have been observed for this gene. A pseudogene of this gene is located on the long arm of chromosome 6. [provided by RefSeq, Nov 2010]
Research Area	Neuroscience antibody
Calculated Mw	21 kDa
PTM	Sumoylated. Phosphorylated mostly by MAPK8, but also by MAPK9 and MAPK10 in the developing brain cortex. N-terminal palmitoylation promotes specific anchoring to the cytosolic leaflet of Golgi membranes and subsequent vesicular trafficking along dendrites and axons. Neuronal Stathmins are substrates for palmitoyltransferases ZDHHC3, ZDHHC7 and ZDHHC15.

Images



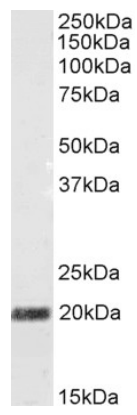
ARG63628 anti-STMN2 / SCG10 antibody WB image

Western Blot: Human Brain lysate (RIPA buffer, 35 µg total protein per lane) stained with ARG63628 anti-STMN2 / SCG10 antibody at 1 µg/ml dilution.



ARG63628 anti-STMN2 / SCG10 antibody IHC-P image

Immunohistochemistry: Paraffin-embedded Human small intestine tissue. Antigen Retrieval: Steam tissue section in Citrate buffer (pH 6.0). The tissue section was stained with ARG63628 anti-STMN2 / SCG10 antibody at 5 µg/ml dilution followed by AP-staining.



ARG63628 anti-STMN2 / SCG10 antibody WB image

Western blot: 35 µg of Mouse foetal brain lysate (in RIPA buffer) stained with ARG63628 anti-STMN2 / SCG10 antibody at 0.5 µg/ml dilution and incubated at RT for 1 hour.