

ARG63661 anti-EHD2 antibody

Package: 100 µg
Store at: -20°C

Summary

Product Description	Goat Polyclonal antibody recognizes EHD2
Tested Reactivity	Hu
Predict Reactivity	Ms, Rat, Cow, Dog
Tested Application	FACS, ICC/IF, IHC-P, WB
Specificity	This antibody is expected to recognise EHD1 protein as well as EHD2.
Host	Goat
Clonality	Polyclonal
Isotype	IgG
Target Name	EHD2
Species	Human
Immunogen	CRLVPPSKRRHKGSA
Conjugation	Un-conjugated
Alternate Names	PAST2; EH domain-containing protein 2; PAST homolog 2

Application Instructions

Application table	Application	Dilution
	FACS	10 µg/ml
	ICC/IF	10 µg/ml
	IHC-P	Assay - dependent
	WB	0.1 - 0.3 µg/ml
Application Note	WB: Recommend incubate at RT for 1h. IHC-P: Antigen Retrieval: Steam tissue section in Citrate buffer (pH 6.0). * The dilutions indicate recommended starting dilutions and the optimal dilutions or concentrations should be determined by the scientist.	

Properties

Form	Liquid
Purification	Purified from goat serum by antigen affinity chromatography.
Buffer	Tris saline (pH 7.3), 0.02% Sodium azide and 0.5% BSA.
Preservative	0.02% Sodium azide
Stabilizer	0.5% BSA

Concentration	0.5 mg/ml
Storage instruction	For continuous use, store undiluted antibody at 2-8°C for up to a week. For long-term storage, aliquot and store at -20°C or below. Storage in frost free freezers is not recommended. Avoid repeated freeze/thaw cycles. Suggest spin the vial prior to opening. The antibody solution should be gently mixed before use.
Note	For laboratory research only, not for drug, diagnostic or other use.

Bioinformation

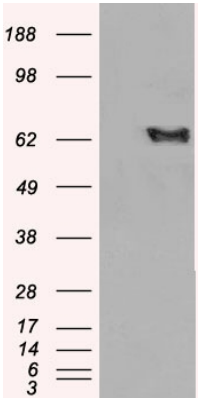
Database links	GeneID: 30846 Human Swiss-port # Q9NZN4 Human
Background	This gene encodes a member of the EH domain-containing protein family. These proteins are characterized by a C-terminal EF-hand domain, a nucleotide-binding consensus site at the N terminus and a bipartite nuclear localization signal. The encoded protein interacts with the actin cytoskeleton through an N-terminal domain and also binds to an EH domain-binding protein through the C-terminal EH domain. This interaction appears to connect clathrin-dependent endocytosis to actin, suggesting that this gene product participates in the endocytic pathway. [provided by RefSeq, Jul 2008]
Research Area	Gene Regulation antibody
Calculated Mw	61 kDa

Images



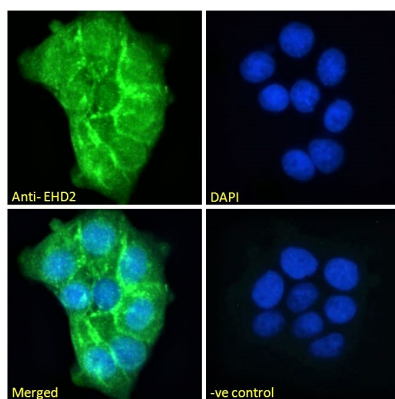
ARG63661 anti-EHD2 antibody WB image

Western Blot: Human Placenta lysate (35 µg protein in RIPA buffer) stained with ARG63661 anti-EHD2 antibody at 0.1 µg/ml dilution.



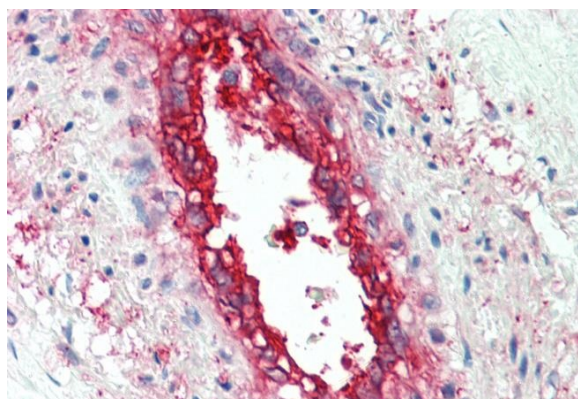
ARG63661 anti-EHD2 antibody WB image

Western Blot: 1). Mock transfection; 2) EHD2 (RC204848) expressing plasmid transfected HEK293 cell lysate standed with ARG63661 anti-EHD2 antibody



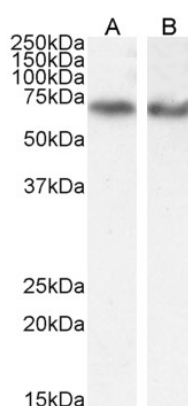
ARG63661 anti-EHD2 antibody ICC/IF image

Immunofluorescence: Paraformaldehyde fixed A431 cells permeabilized with 0.15% Triton. Cells were stained with ARG63661 anti-EHD2 antibody (green) at 10 µg/ml dilution for 1 hour. DAPI (blue) for nuclear staining. Negative control: Unimmunized goat IgG (green) at 10 µg/ml dilution.



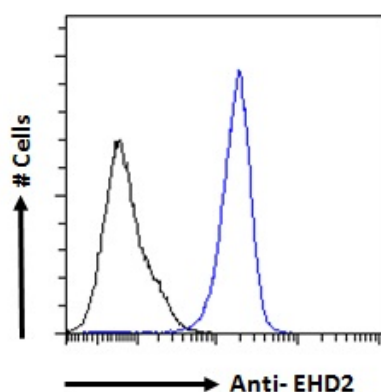
ARG63661 anti-EHD2 antibody IHC-P image

Immunohistochemistry: Paraffin-embedded Human vessel tissue. Antigen Retrieval: Steam tissue section in Citrate buffer (pH 6.0). The tissue section was stained with ARG63661 anti-EHD2 antibody at 5 µg/ml dilution followed by AP-staining.



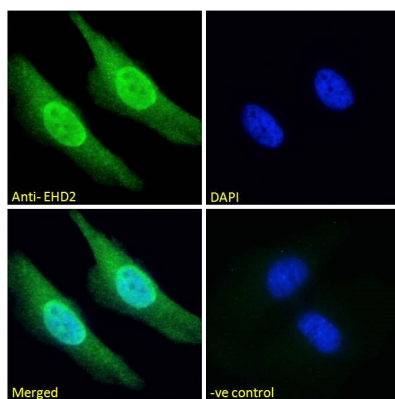
ARG63661 anti-EHD2 antibody WB image

Western blot: 35 µg of A549 (A) and HeLa (B) cell lysates (in RIPA buffer) stained with ARG63661 anti-EHD2 antibody at 0.1 µg/ml (A) and 0.3 µg/ml (B) dilutions and incubated at RT for 1 hour.



ARG63661 anti-EHD2 antibody FACS image

Flow Cytometry: Paraformaldehyde-fixed A431 cells permeabilized with 0.5% Triton. Cells were stained with ARG63661 anti-EHD2 antibody (blue line) at 10 µg/ml dilution for 1 hour, followed by incubation with Alexa FluorR 488 labelled secondary antibody. IgG control: Unimmunized goat IgG (black line).



ARG63661 anti-EHD2 antibody ICC/IF image

Immunofluorescence: Paraformaldehyde fixed HeLa cells permeabilized with 0.15% Triton. Cells were stained with ARG63661 anti-EHD2 antibody (green) at 10 µg/ml dilution for 1 hour. DAPI (blue) for nuclear staining. Negative control: Unimmunized goat IgG (green) at 10 µg/ml dilution.



ARG63661 anti-EHD2 antibody WB image

Western blot: 35 µg of Human lung lysate (in RIPA buffer) stained with ARG63661 anti-EHD2 antibody at 0.3 µg/ml dilution and incubated at RT for 1 hour.