

ARG63677 anti-Swiprosin 1 / EFHD2 antibody

Package: 100 µg
Store at: -20°C

Summary

Product Description	Goat Polyclonal antibody recognizes Swiprosin 1 / EFHD2
Tested Reactivity	Hu
Predict Reactivity	Ms, Rat, Cow, Dog
Tested Application	WB
Specificity	This antibody does not cross-react with Mouse Swiprosin 2. Data kindly provided by Sebastian Duetting and Dirk Mielenz.
Host	Goat
Clonality	Polyclonal
Isotype	IgG
Target Name	Swiprosin 1 / EFHD2
Species	Human
Immunogen	CAAFKELQSTFK
Conjugation	Un-conjugated
Alternate Names	EF-hand domain-containing protein D2; Swiprosin-1; SWS1

Application Instructions

Application table	Application	Dilution
	WB	0.5 - 1.5 µg/ml
Application Note	WB: Recommend incubate at RT for 1h. * The dilutions indicate recommended starting dilutions and the optimal dilutions or concentrations should be determined by the scientist.	

Properties

Form	Liquid
Purification	Purified from goat serum by antigen affinity chromatography.
Buffer	Tris saline (pH 7.3), 0.02% Sodium azide and 0.5% BSA.
Preservative	0.02% Sodium azide
Stabilizer	0.5% BSA
Concentration	0.5 mg/ml
Storage instruction	For continuous use, store undiluted antibody at 2-8°C for up to a week. For long-term storage, aliquot and store at -20°C or below. Storage in frost free freezers is not recommended. Avoid repeated freeze/thaw cycles. Suggest spin the vial prior to opening. The antibody solution should be gently mixed before use.

Note

For laboratory research only, not for drug, diagnostic or other use.

Bioinformation

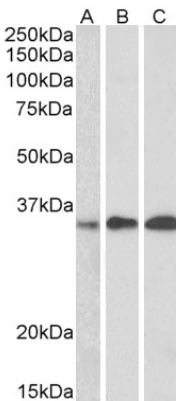
Database links	GeneID: 79180 Human Swiss-port # Q96C19 Human
Gene Symbol	EFHD2
Gene Full Name	EF-hand domain family, member D2
Function	May regulate B-cell receptor (BCR)-induced immature and primary B-cell apoptosis. Plays a role as negative regulator of the canonical NF-kappa-B-activating branch. Controls spontaneous apoptosis through the regulation of BCL2L1 abundance. [UniProt]
Research Area	Signaling Transduction antibody
Calculated Mw	27 kDa

Images



ARG63677 anti-Swiprosin 1 / EFHD2 antibody WB image

Western Blot: human lymph node lysate. stained with ARG63677 anti-Swiprosin 1 / EFHD2 antibody at 0.1 µg/ml dilution.



ARG63677 anti-Swiprosin 1 / EFHD2 antibody WB image

Western blot: 35 µg of Human thymus (A), Human lymph node (B) and Human tonsil (C) lysates (in RIPA buffer) stained with ARG63677 anti-Swiprosin 1 / EFHD2 antibody at 0.5 µg/ml dilution and incubated at RT for 1 hour.