

ARG63688 anti-SLIMMER / FHL1 isoform B antibody

Package: 100 µg
Store at: -20°C

Summary

Product Description	Goat Polyclonal antibody recognizes SLIMMER / FHL1 isoform B
Tested Reactivity	Hu
Predict Reactivity	Ms, Dog
Tested Application	WB
Specificity	This antibody is specific for the FHL-1 isoform B (SLIMMER) and is expected to recognise an epitope corresponding to aa 233-246 of human SLIMMER protein.
Host	Goat
Clonality	Polyclonal
Isotype	IgG
Target Name	SLIMMER / FHL1 isoform B
Species	Human
Immunogen	CTVSRVSHPVSKARK
Conjugation	Un-conjugated
Alternate Names	FHL1A; FHL1B; KYOT; Four and a half LIM domains protein 1; SLIM; FLH1A; XMPMA; FHL-1; SLIM-1; SLIM1; SLIMMER; Skeletal muscle LIM-protein 1

Application Instructions

Application table	Application	Dilution
	WB	0.01 - 0.1 µg/ml
Application Note	WB: Recommend incubate at RT for 1h. * The dilutions indicate recommended starting dilutions and the optimal dilutions or concentrations should be determined by the scientist.	

Properties

Form	Liquid
Purification	Purified from goat serum by antigen affinity chromatography.
Buffer	Tris saline (pH 7.3), 0.02% Sodium azide and 0.5% BSA.
Preservative	0.02% Sodium azide
Stabilizer	0.5% BSA
Concentration	0.5 mg/ml
Storage instruction	For continuous use, store undiluted antibody at 2-8°C for up to a week. For long-term storage, aliquot and store at -20°C or below. Storage in frost free freezers is not recommended. Avoid repeated freeze/thaw cycles. Suggest spin the vial prior to opening. The antibody solution should be gently mixed

before use.

Note

For laboratory research only, not for drug, diagnostic or other use.

Bioinformation

Database links

[GeneID: 2273 Human](#)

[Swiss-port # Q13642 Human](#)

Background

This gene encodes a member of the four-and-a-half-LIM-only protein family. Family members contain two highly conserved, tandemly arranged, zinc finger domains with four highly conserved cysteines binding a zinc atom in each zinc finger. Expression of these family members occurs in a cell- and tissue-specific mode and these proteins are involved in many cellular processes. Mutations in this gene have been found in patients with Emery-Dreifuss muscular dystrophy. Multiple alternately spliced transcript variants which encode different protein isoforms have been described.[provided by RefSeq, Nov 2009]

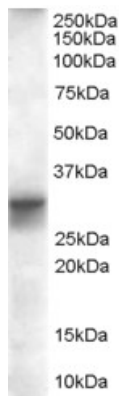
Research Area

Cell Biology and Cellular Response antibody; Gene Regulation antibody

Calculated Mw

36 kDa

Images



ARG63688 anti-SLIMMER / FHL1 isoform B antibody WB image

Western Blot: Human Heart lysate (35 µg protein in RIPA buffer) stained with ARG63688 anti-SLIMMER / FHL1 isoform B antibody at 0.01 µg/ml dilution.