

## ARG63690 anti-ARHGEF4 antibody

Package: 100 µg  
Store at: -20°C

### Summary

Product Description	Goat Polyclonal antibody recognizes ARHGEF4
Tested Reactivity	Hu
Tested Application	WB
Specificity	This antibody is expected to recognise both reported isoforms (NP_056135.2; NP_127462.1).
Host	Goat
Clonality	Polyclonal
Isotype	IgG
Target Name	ARHGEF4
Species	Human
Immunogen	PWEEPAGEKPCSCS
Conjugation	Un-conjugated
Alternate Names	STM6; Rho guanine nucleotide exchange factor 4; Asef; GEF4; APC-stimulated guanine nucleotide exchange factor 1; Asef1; ASEF; ASEF1

### Application Instructions

Application table	Application	Dilution
	WB	2 - 4 µg/ml
Application Note	WB: Recommend incubate at RT for 1h. * The dilutions indicate recommended starting dilutions and the optimal dilutions or concentrations should be determined by the scientist.	

### Properties

Form	Liquid
Purification	Purified from goat serum by antigen affinity chromatography.
Buffer	Tris saline (pH 7.3), 0.02% Sodium azide and 0.5% BSA.
Preservative	0.02% Sodium azide
Stabilizer	0.5% BSA
Concentration	0.5 mg/ml
Storage instruction	For continuous use, store undiluted antibody at 2-8°C for up to a week. For long-term storage, aliquot and store at -20°C or below. Storage in frost free freezers is not recommended. Avoid repeated freeze/thaw cycles. Suggest spin the vial prior to opening. The antibody solution should be gently mixed before use.
Note	For laboratory research only, not for drug, diagnostic or other use.

Bioinformation

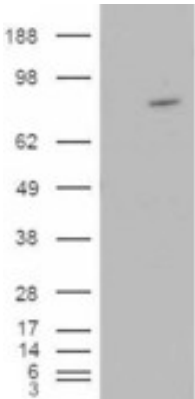
Database links	<a href="#">GeneID: 50649 Human</a>  <a href="#">Swiss-port # Q9NR80 Human</a>
Background	Rho GTPases play a fundamental role in numerous cellular processes that are initiated by extracellular stimuli that work through G protein coupled receptors. The encoded protein may form complex with G proteins and stimulate Rho-dependent signals. This protein is similar to rat collybistin protein. Alternative splicing of this gene generates two transcript variants which encode different isoforms. Also there is possibility for the usage of multiple polyadenylation sites for this gene. [provided by RefSeq, Jul 2008]
Research Area	Cell Biology and Cellular Response antibody; Signaling Transduction antibody
Calculated Mw	79 kDa

Images



ARG63690 anti-ARHGEF4 antibody WB image

Western Blot: Human Brain lysate (35 µg protein in RIPA buffer) stained with ARG63690 anti-ARHGEF4 antibody at 2 µg/ml dilution.



ARG63690 anti-ARHGEF4 antibody WB image

Western Blot: 1). Mock transfection; 2) ARHGEF4 (RC215591) expressing plasmid transfected HEK293 cell lysate stained with ARG63690 anti-ARHGEF4 antibody