

ARG63726 anti-PDE5A antibody

Package: 100 µg
Store at: -20°C

Summary

Product Description	Goat Polyclonal antibody recognizes PDE5A
Tested Reactivity	Hu
Predict Reactivity	Cow, Rat, Dog
Tested Application	FACS, ICC/IF, WB
Specificity	This antibody is expected to recognise reported isoforms NP_001074.2, NP_236914.2 and NP_246273.2.
Host	Goat
Clonality	Polyclonal
Isotype	IgG
Target Name	PDE5A
Species	Human
Immunogen	C-LINGESGQAKRN
Conjugation	Un-conjugated
Alternate Names	cGMP-specific 3',5'-cyclic phosphodiesterase; CN5A; CGB-PDE; cGMP-binding cGMP-specific phosphodiesterase; PDE5; EC 3.1.4.35

Application Instructions

Application table	Application	Dilution
	FACS	10 µg/ml
	ICC/IF	10 µg/ml
	WB	0.3 - 1 µg/ml
Application Note	WB: Recommend incubate at RT for 1h. * The dilutions indicate recommended starting dilutions and the optimal dilutions or concentrations should be determined by the scientist.	

Properties

Form	Liquid
Purification	Purified from goat serum by antigen affinity chromatography.
Buffer	Tris saline (pH 7.3), 0.02% Sodium azide and 0.5% BSA.
Preservative	0.02% Sodium azide
Stabilizer	0.5% BSA
Concentration	0.5 mg/ml

Storage instruction	For continuous use, store undiluted antibody at 2-8°C for up to a week. For long-term storage, aliquot and store at -20°C or below. Storage in frost free freezers is not recommended. Avoid repeated freeze/thaw cycles. Suggest spin the vial prior to opening. The antibody solution should be gently mixed before use.
Note	For laboratory research only, not for drug, diagnostic or other use.

Bioinformation

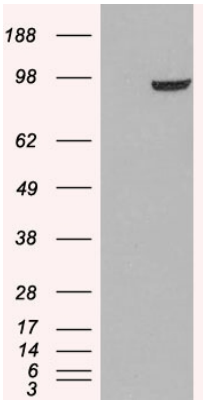
Database links	GeneID: 8654 Human Swiss-port # O76074 Human
Background	This gene encodes a cGMP-binding, cGMP-specific phosphodiesterase, a member of the cyclic nucleotide phosphodiesterase family. This phosphodiesterase specifically hydrolyzes cGMP to 5'-GMP. It is involved in the regulation of intracellular concentrations of cyclic nucleotides and is important for smooth muscle relaxation in the cardiovascular system. Alternative splicing of this gene results in three transcript variants encoding distinct isoforms. [provided by RefSeq, Jul 2008]
Research Area	Cancer antibody; Cell Biology and Cellular Response antibody; Metabolism antibody; Signaling Transduction antibody
Calculated Mw	100 kDa
PTM	Phosphorylation is regulated by binding of cGMP to the two allosteric sites (By similarity). Phosphorylation by PRKG1 leads to its activation.

Images



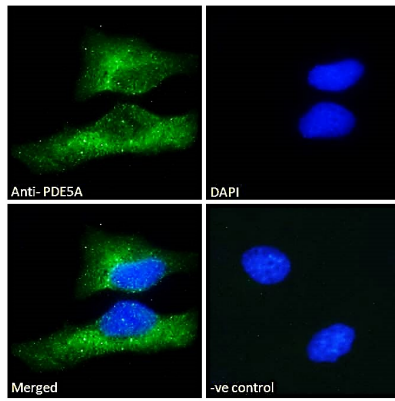
ARG63726 anti-PDE5A antibody WB image

Western Blot: human lung lysate (RIPA buffer, 30µg total protein per lane) stained with ARG63726 anti-PDE5A antibody at 0.3 µg/ml dilution.



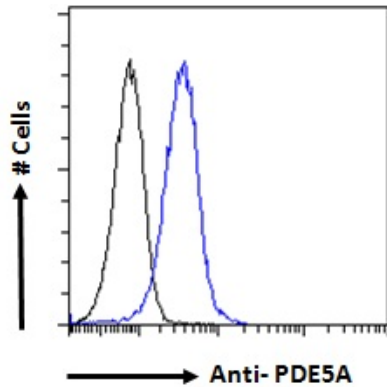
ARG63726 anti-PDE5A antibody WB image

Western Blot: 1). Mock transfection; 2) PDE5A (RC218974) expressing plasmid transfected HEK293 cell lysate standned with ARG63726 anti-PDE5A antibody



ARG63726 anti-PDE5A antibody ICC/IF image

Immunofluorescence: Paraformaldehyde fixed HeLa cells permeabilized with 0.15% Triton. Cells were stained with ARG63726 anti-PDE5A antibody (green) at 10 µg/ml dilution for 1 hour. DAPI (blue) for nuclear staining. Negative control: Unimmunized goat IgG (green) at 10 µg/ml dilution.



ARG63726 anti-PDE5A antibody FACS image

Flow Cytometry: Paraformaldehyde-fixed HEK293 cells permeabilized with 0.5% Triton. Cells were stained with ARG63726 anti-PDE5A antibody (blue line) at 10 µg/ml dilution for 1 hour, followed by incubation with Alexa FluorR 488 labelled secondary antibody. IgG control: Unimmunized goat IgG (black line).