

ARG63740 anti-PPP2R1A antibody

Package: 100 µg
Store at: -20°C

Summary

Product Description	Goat Polyclonal antibody recognizes PPP2R1A
Tested Reactivity	Hu
Predict Reactivity	Ms, Rat, Cow, Dog, Pig
Tested Application	IHC-P, WB
Host	Goat
Clonality	Polyclonal
Isotype	IgG
Target Name	PPP2R1A
Species	Human
Immunogen	C-KYFAQEALTVLSLA
Conjugation	Un-conjugated
Alternate Names	Medium tumor antigen-associated 61 kDa protein; PP2A subunit A isoform R1-alpha; PP2A-Aalpha; PR65A; PP2A subunit A isoform PR65-alpha; Serine/threonine-protein phosphatase 2A 65 kDa regulatory subunit A alpha isoform; MRD36; PP2AAALPHA

Application Instructions

Application table	Application	Dilution
	IHC-P	Assay - dependent
	WB	2 - 6 µg/ml
Application Note	WB: Recommend incubate at RT for 1h. IHC-P: Antigen Retrieval: Steam tissue section in Citrate buffer (pH 6.0). * The dilutions indicate recommended starting dilutions and the optimal dilutions or concentrations should be determined by the scientist.	

Properties

Form	Liquid
Purification	Purified from goat serum by antigen affinity chromatography.
Buffer	Tris saline (pH 7.3), 0.02% Sodium azide and 0.5% BSA.
Preservative	0.02% Sodium azide
Stabilizer	0.5% BSA
Concentration	0.5 mg/ml
Storage instruction	For continuous use, store undiluted antibody at 2-8°C for up to a week. For long-term storage, aliquot and store at -20°C or below. Storage in frost free freezers is not recommended. Avoid repeated

freeze/thaw cycles. Suggest spin the vial prior to opening. The antibody solution should be gently mixed before use.

Note

For laboratory research only, not for drug, diagnostic or other use.

Bioinformation

Database links

[GeneID: 5518 Human](#)

[Swiss-port # P30153 Human](#)

Background

This gene encodes a constant regulatory subunit of protein phosphatase 2. Protein phosphatase 2 is one of the four major Ser/Thr phosphatases, and it is implicated in the negative control of cell growth and division. It consists of a common heteromeric core enzyme, which is composed of a catalytic subunit and a constant regulatory subunit, that associates with a variety of regulatory subunits. The constant regulatory subunit A serves as a scaffolding molecule to coordinate the assembly of the catalytic subunit and a variable regulatory B subunit. This gene encodes an alpha isoform of the constant regulatory subunit A. Alternatively spliced transcript variants have been described. [provided by RefSeq, Apr 2010]

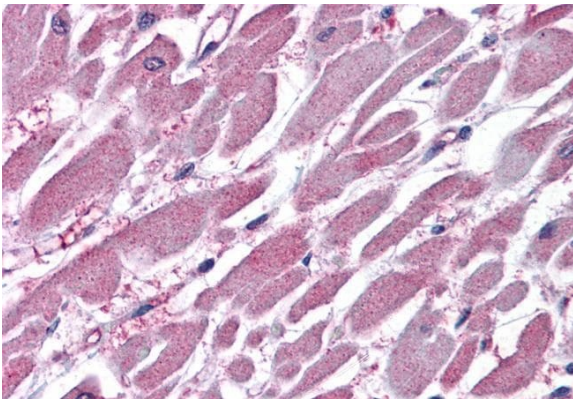
Research Area

Signaling Transduction antibody

Calculated Mw

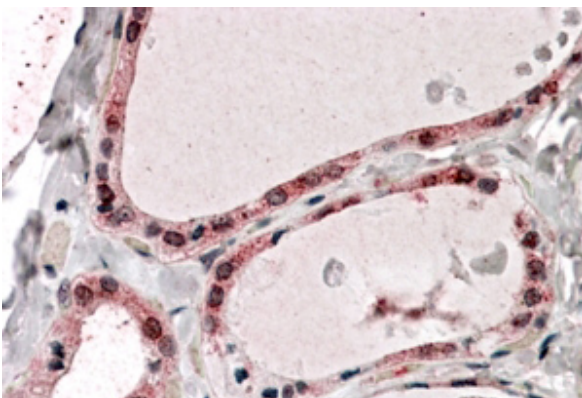
65 kDa

Images



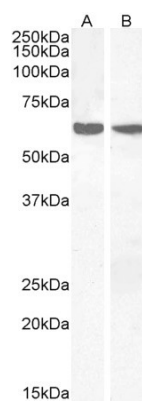
ARG63740 anti-PPP2R1A antibody IHC-P image

Immunohistochemistry: Paraffin-embedded Human heart tissue. Antigen Retrieval: Steam tissue section in Citrate buffer (pH 6.0). The tissue section was stained with ARG63740 anti-PPP2R1A antibody at 3.75 µg/ml dilution followed by AP-staining.



ARG63740 anti-PPP2R1A antibody IHC image

Immunohistochemistry: paraffin-embedded Human Thyroid Gland (Steamed antigen retrieval with citrate buffer pH 6) stained with ARG63740 anti-PPP2R1A antibody at 3.8 µg/ml dilution, followed by AP-staining.



ARG63740 anti-PPP2R1A antibody WB image

Western blot: 35 µg of Human thymus (A) and Human lymph node (B) lysates (in RIPA buffer) stained with ARG63740 anti-PPP2R1A antibody at 2 µg/ml dilution and incubated at RT for 1 hour.