

## ARG63745 anti-RBP1 antibody

Package: 100 µg  
Store at: -20°C

### Summary

Product Description	Goat Polyclonal antibody recognizes RBP1
Tested Reactivity	Hu, Ms
Predict Reactivity	Cow
Tested Application	FACS, ICC/IF, IHC-P, WB
Host	Goat
Clonality	Polyclonal
Isotype	IgG
Target Name	RBP1
Species	Human
Immunogen	VEGVVCKQVFKKVQ
Conjugation	Un-conjugated
Alternate Names	RBPC; CRBP-I; Cellular retinol-binding protein I; CRBP; CRBP1; Cellular retinol-binding protein; CRABP-I; Retinol-binding protein 1; CRBPI

### Application Instructions

Application table	Application	Dilution
	FACS	10 µg/ml
	ICC/IF	10 µg/ml
	IHC-P	Assay - dependent
	WB	0.5 - 3 µg/ml
Application Note	WB: Recommend incubate at RT for 1h. IHC-P: Antigen Retrieval: Steam tissue section in Citrate buffer (pH 6.0). * The dilutions indicate recommended starting dilutions and the optimal dilutions or concentrations should be determined by the scientist.	

### Properties

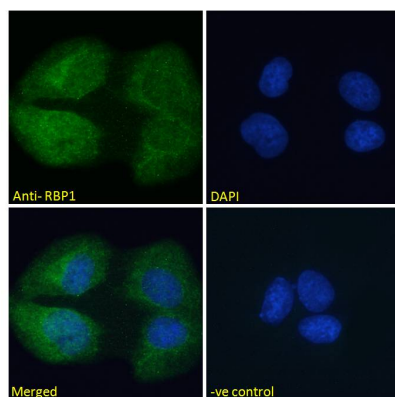
Form	Liquid
Purification	Purified from goat serum by antigen affinity chromatography.
Buffer	Tris saline (pH 7.3), 0.02% Sodium azide and 0.5% BSA.
Preservative	0.02% Sodium azide
Stabilizer	0.5% BSA
Concentration	0.5 mg/ml

Storage instruction	For continuous use, store undiluted antibody at 2-8°C for up to a week. For long-term storage, aliquot and store at -20°C or below. Storage in frost free freezers is not recommended. Avoid repeated freeze/thaw cycles. Suggest spin the vial prior to opening. The antibody solution should be gently mixed before use.
Note	For laboratory research only, not for drug, diagnostic or other use.

## Bioinformation

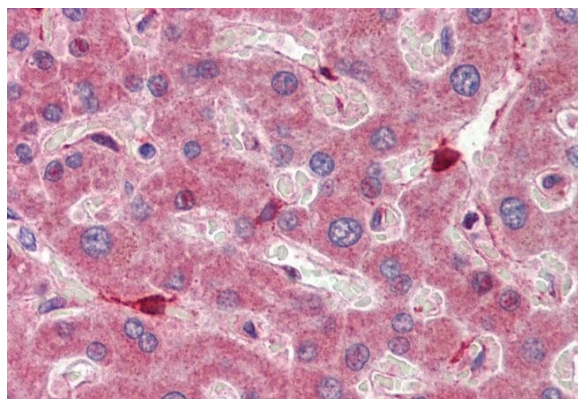
Database links	<a href="#">GeneID: 19659 Mouse</a> <a href="#">GeneID: 5947 Human</a> <a href="#">Swiss-port # P09455 Human</a> <a href="#">Swiss-port # Q00915 Mouse</a>
Background	This gene encodes the carrier protein involved in the transport of retinol (vitamin A alcohol) from the liver storage site to peripheral tissue. Vitamin A is a fat-soluble vitamin necessary for growth, reproduction, differentiation of epithelial tissues, and vision. Multiple transcript variants encoding different isoforms have been found for this gene. [provided by RefSeq, Aug 2008]
Research Area	Gene Regulation antibody; Signaling Transduction antibody
Calculated Mw	16 kDa

## Images



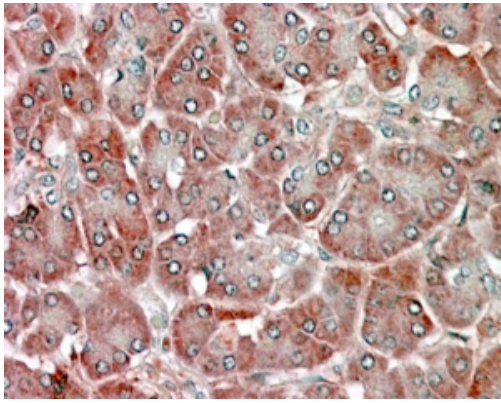
ARG63745 anti-RBP1 antibody ICC/IF image

Immunofluorescence: Paraformaldehyde fixed U2OS cells permeabilized with 0.15% Triton. Cells were stained with ARG63745 anti-RBP1 antibody (green) at 10 µg/ml dilution for 1 hour. DAPI (blue) for nuclear staining. Negative control: Unimmunized goat IgG (green) at 10 µg/ml dilution.



ARG63745 anti-RBP1 antibody IHC-P image

Immunohistochemistry: Paraffin-embedded Human liver tissue. Antigen Retrieval: Steam tissue section in Citrate buffer (pH 6.0). The tissue section was stained with ARG63745 anti-RBP1 antibody at 5 µg/ml dilution followed by AP-staining.



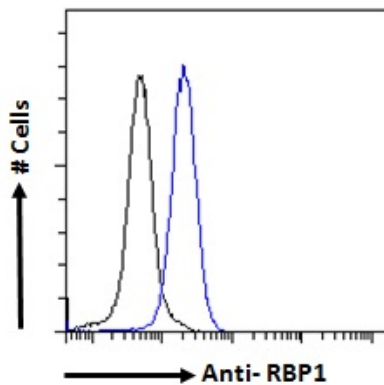
ARG63745 anti-RBP1 antibody IHC-P image

Immunohistochemistry: paraffin embedded Human Pancreas. (Steamed antigen retrieval with citrate buffer pH 6) stained with ARG63745 anti-RBP1 antibody at 5 µg/ml dilution followed by AP-staining.



ARG63745 anti-RBP1 antibody WB image

Western blot: 35 µg of NIH/3T3 (A) and U251 (B) cell lysates (in RIPA buffer) stained with ARG63745 anti-RBP1 antibody at 2 µg/ml (A) and 0.5 µg/ml (B) dilutions and incubated at RT for 1 hour.



ARG63745 anti-RBP1 antibody FACS image

Flow Cytometry: Paraformaldehyde-fixed HeLa cells permeabilized with 0.5% Triton. Cells were stained with ARG63745 anti-RBP1 antibody (blue line) at 10 µg/ml dilution and overnight, followed by incubation with Alexa FluorR 488 labelled secondary antibody. IgG control: Unimmunized goat IgG (black line).