

## ARG63768 anti-Neuroserpin antibody

Package: 100 µg  
Store at: -20°C

### Summary

Product Description	Goat Polyclonal antibody recognizes Neuroserpin
Tested Reactivity	Hu
Predict Reactivity	Ms, Rat, Cow, Pig
Tested Application	IHC-P, WB
Specificity	Reported variants represent identical protein (NP_005016.1; NP_001116224.1).
Host	Goat
Clonality	Polyclonal
Isotype	IgG
Target Name	Neuroserpin
Species	Human
Immunogen	C-TMNTSGHDFEEL
Conjugation	Un-conjugated
Alternate Names	Peptidase inhibitor 12; neuroserpin; Neuroserpin; Serpin I1; PI12; PI-12

### Application Instructions

Application table	Application	Dilution
	IHC-P	5 µg/ml
	WB	1 - 3 µg/ml
Application Note	WB: Recommend incubate at RT for 1h. IHC-P: Antigen Retrieval: Steam tissue section in Citrate buffer (pH 6.0). * The dilutions indicate recommended starting dilutions and the optimal dilutions or concentrations should be determined by the scientist.	

### Properties

Form	Liquid
Purification	Purified from goat serum by antigen affinity chromatography.
Buffer	Tris saline (pH 7.3), 0.02% Sodium azide and 0.5% BSA.
Preservative	0.02% Sodium azide
Stabilizer	0.5% BSA
Concentration	0.5 mg/ml
Storage instruction	For continuous use, store undiluted antibody at 2-8°C for up to a week. For long-term storage, aliquot and store at -20°C or below. Storage in frost free freezers is not recommended. Avoid repeated freeze/thaw cycles. Suggest spin the vial prior to opening. The antibody solution should be gently mixed

before use.

#### Note

For laboratory research only, not for drug, diagnostic or other use.

## Bioinformation

#### Database links

[GeneID: 5274 Human](#)

[Swiss-port # Q99574 Human](#)

#### Background

This gene encodes a member of the serpin superfamily of serine proteinase inhibitors. The protein is primarily secreted by axons in the brain, and preferentially reacts with and inhibits tissue-type plasminogen activator. It is thought to play a role in the regulation of axonal growth and the development of synaptic plasticity. Mutations in this gene result in familial encephalopathy with neuroserpin inclusion bodies (FENIB), which is a dominantly inherited form of familial encephalopathy and epilepsy characterized by the accumulation of mutant neuroserpin polymers. Multiple alternatively spliced variants, encoding the same protein, have been identified. [provided by RefSeq, Jul 2008]

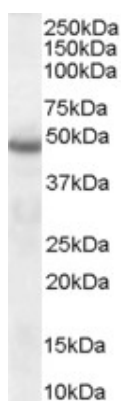
#### Research Area

Neuroscience antibody

#### Calculated Mw

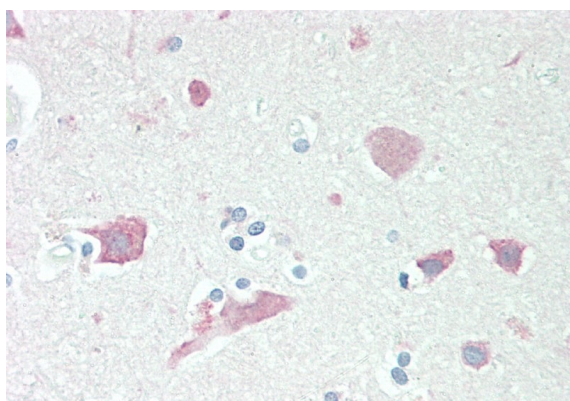
46 kDa

## Images



ARG63768 anti-Neuroserpin antibody WB image

Western Blot: Human Brain lysate (35 µg protein in RIPA buffer) stained with ARG63768 anti-Neuroserpin antibody at 1 µg/ml dilution.



ARG63768 anti-Neuroserpin antibody IHC-P image

Immunohistochemistry: Paraffin-embedded Human cortex tissue. Antigen Retrieval: Steam tissue section in Citrate buffer (pH 6.0). The tissue section was stained with ARG63768 anti-Neuroserpin antibody at 5 µg/ml dilution followed by AP-staining.