

ARG63808 anti-Aminopeptidase A antibody

Package: 100 µg
Store at: -20°C

Summary

Product Description	Goat Polyclonal antibody recognizes Aminopeptidase A
Tested Reactivity	Hu, Rat
Predict Reactivity	Ms, Cow, Dog, Pig
Tested Application	IHC-P, WB
Host	Goat
Clonality	Polyclonal
Isotype	IgG
Target Name	Aminopeptidase A
Species	Human
Immunogen	C-EQYQKTSLAQEKEK
Conjugation	Un-conjugated
Alternate Names	Aminopeptidase A; Glutamyl aminopeptidase; CD antigen CD249; Differentiation antigen gp160; gp160; EC 3.4.11.7; AP-A; EAP; APA; CD249

Application Instructions

Application table	Application	Dilution
	IHC-P	3 - 5 µg/ml
	WB	1 - 3 µg/ml
Application Note	IHC-P: Antigen Retrieval: Steam tissue section in Citrate buffer (pH 6.0). WB: Recommend incubate at RT for 1h. * The dilutions indicate recommended starting dilutions and the optimal dilutions or concentrations should be determined by the scientist.	

Properties

Form	Liquid
Purification	Purified from goat serum by antigen affinity chromatography.
Buffer	Tris saline (pH 7.3), 0.02% Sodium azide and 0.5% BSA.
Preservative	0.02% Sodium azide
Stabilizer	0.5% BSA
Concentration	0.5 mg/ml
Storage instruction	For continuous use, store undiluted antibody at 2-8°C for up to a week. For long-term storage, aliquot and store at -20°C or below. Storage in frost free freezers is not recommended. Avoid repeated freeze/thaw cycles. Suggest spin the vial prior to opening. The antibody solution should be gently mixed

before use.

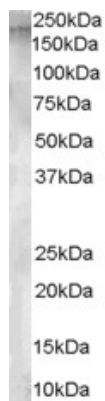
Note

For laboratory research only, not for drug, diagnostic or other use.

Bioinformation

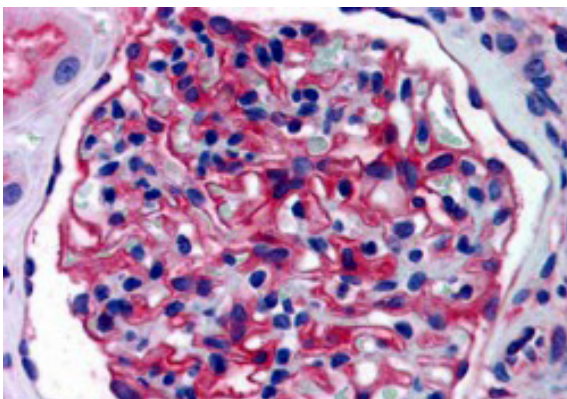
Database links	GeneID: 2028 Human GeneID: 64017 Rat Swiss-port # P50123 Rat Swiss-port # Q07075 Human
Gene Symbol	ENPEP
Gene Full Name	glutamyl aminopeptidase (aminopeptidase A)
Function	Appears to have a role in the catabolic pathway of the renin-angiotensin system. Probably plays a role in regulating growth and differentiation of early B-lineage cells. [UniProt]
Research Area	Developmental Biology antibody; Immune System antibody
Calculated Mw	109 kDa

Images



ARG63808 anti-Aminopeptidase A antibody WB image

Western Blot: human testis lysate (RIPA buffer, 30µg total protein per lane) stained with ARG63808 anti-Aminopeptidase A antibody at 1 µg/ml dilution.



ARG63808 anti-Aminopeptidase A antibody IHC-P image

Immunohistochemistry: paraffin embedded Human Kidney. (Steamed antigen retrieval with citrate buffer pH 6) stained with ARG63808 anti-Aminopeptidase A antibody at 3.8 µg/ml dilution followed by AP-staining.